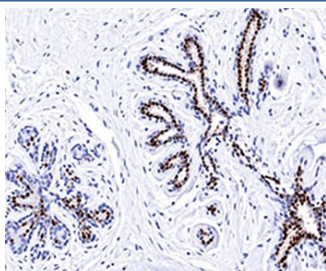


## Progesterone Receptor Antibody [clone PR501] (V2226)

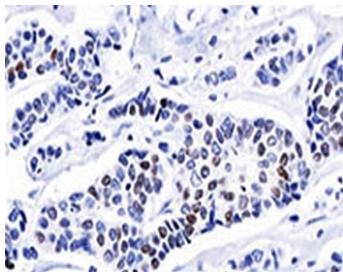
Catalog No.	Formulation	Size
V2226-100UG	0.2 mg/ml in 1X PBS with 0.1 mg/ml BSA (US sourced) and 0.05% sodium azide	100 ug
V2226-20UG	0.2 mg/ml in 1X PBS with 0.1 mg/ml BSA (US sourced) and 0.05% sodium azide	20 ug
V2226SAF-100UG	1 mg/ml in 1X PBS; BSA free, sodium azide free	100 ug

[Bulk quote request](#)

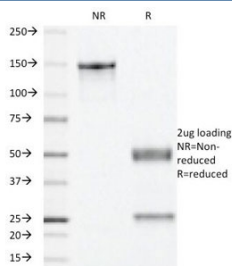
<b>Species Reactivity</b>	Human
<b>Format</b>	Purified
<b>Clonality</b>	Monoclonal (mouse origin)
<b>Isotype</b>	Mouse IgG1, kappa
<b>Clone Name</b>	PR501
<b>Purity</b>	Protein G affinity chromatography
<b>Buffer</b>	1X PBS, pH 7.4
<b>Gene ID</b>	5241
<b>Localization</b>	Nuclear, cytoplasmic
<b>Applications</b>	Western Blot : 0.5-1ug/ml for 2 hr at RT Immunohistochemistry (FFPE) : 0.5-1ug/ml
<b>Limitations</b>	This <b>Progesterone receptor antibody</b> is available for research use only.



IHC testing of normal human breast stained with Progesterone receptor antibody (PR501).



IHC testing of invasive ductal carcinoma stained with progesterone receptor antibody (PR501).



SDS-PAGE Analysis of Purified, BSA-Free Progesterone Receptor Antibody (clone PR501). Confirmation of Integrity and Purity of the Antibody.

## Description

This antibody is specific to progesterone receptor and shows minimal cross-reaction with other members of the family. Progesterone receptor is expressed as two major isoforms, PR-A (81kDa) and PR-B (116kDa). Expression of progesterone receptor has been suggested to reflect a intact estrogen regulatory machinery and therefore predict better clinical response to endocrine therapy than ER alone.

## Application Notes

The concentration stated for each application is a general starting point. Variations in protocols, secondaries and substrates may require the antibody to be titrated up or down for optimal performance.

1. Staining of formalin-fixed tissues requires boiling tissue sections in 10mM citrate buffer, pH 6.0, for 10-20 min followed by cooling at RT for 20 minutes.

## Immunogen

Recombinant human Progesterone Receptor protein was used as the immunogen for this antibody.

## Storage

Store the Progesterone receptor antibody at 2-8°C (with azide) or aliquot and store at -20°C or colder (without azide).

## Alternate Names

NR3C3, Nuclear receptor subfamily 3 group C member 3, PGR, PR, PRA, PRB, Progesterone receptor form A, Progesterone receptor form B, Progesterone receptor antibody

## References (2)

