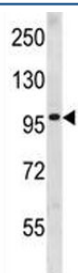


Progesterone Receptor Antibody / Isoform A & B (F47595)

Catalog No.	Formulation	Size
F47595-0.4ML	In 1X PBS, pH 7.4, with 0.09% sodium azide	0.4 ml
F47595-0.08ML	In 1X PBS, pH 7.4, with 0.09% sodium azide	0.08 ml

Bulk quote request

Availability	1-3 business days
Species Reactivity	Human
Predicted Reactivity	Mouse, Rat
Format	Antigen affinity purified
Clonality	Polyclonal (rabbit origin)
Isotype	Rabbit Ig
Purity	Antigen affinity
UniProt	P06401
Applications	Western Blot : 1:1000
Limitations	This Progesterone Receptor antibody is available for research use only.



Progesterone Receptor antibody western blot analysis in human CEM lysate. Expected molecular weight: 82-94 kDa (PR-A) and 99-120 kDa (PR-B).

Description

This gene encodes a member of the steroid receptor superfamily. The encoded protein mediates the physiological effects of progesterone, which plays a central role in reproductive events associated with the establishment and maintenance of pregnancy. This gene uses two distinct promoters and translation start sites in the first exon to produce two isoforms, A and B. The two isoforms are identical except for the additional 165 amino acids found in the N-terminus of isoform B and mediate their own response genes and physiologic effects with little overlap. The location of transcription initiation for isoform A has not been clearly determined.

Application Notes

Titration of the Progesterone Receptor antibody may be required due to differences in protocols and secondary/substrate sensitivity.

Immunogen

A portion of amino acids 523-550 from the human protein was used as the immunogen for this Progesterone Receptor antibody.

Storage

Aliquot the Progesterone Receptor antibody and store frozen at -20oC or colder. Avoid repeated freeze-thaw cycles.