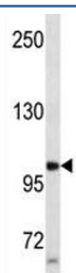


## Progesterone Receptor Antibody / Isoform A & B [clone 312CT8.2.1.6] (F40307)

Catalog No.	Formulation	Size
F40307-0.4ML	In 1X PBS, pH 7.4, with 0.09% sodium azide	0.4 ml
F40307-0.08ML	In 1X PBS, pH 7.4, with 0.09% sodium azide	0.08 ml

**Bulk quote request**

<b>Availability</b>	1-3 business days
<b>Species Reactivity</b>	Human
<b>Format</b>	Purified
<b>Clonality</b>	Monoclonal (mouse origin)
<b>Isotype</b>	Mouse IgM, k
<b>Clone Name</b>	312CT8.2.1.6
<b>Purity</b>	Purified
<b>UniProt</b>	P06401
<b>Applications</b>	Western Blot : 1:100
<b>Limitations</b>	This Progesterone Receptor antibody is available for research use only.



Progesterone Receptor antibody western blot analysis in SK-BR-3 lysate. Expected molecular weight: 82-94 kDa (isoform A) and 99-120 kDa (isoform B).

### Description

This gene encodes a member of the steroid receptor superfamily. The encoded protein mediates the physiological effects of progesterone, which plays a central role in reproductive events associated with the establishment and maintenance of pregnancy. This gene uses two distinct promoters and translation start sites in the first exon to produce two isoforms, A and B. The two isoforms are identical except for the additional 165 amino acids found in the N-terminus of isoform B and mediate their own response genes and physiologic effects with little overlap. The location of transcription initiation for isoform A has not been clearly determined.

## Application Notes

Titration of the Progesterone Receptor antibody may be required due to differences in protocols and secondary/substrate sensitivity.

## Immunogen

A portion of amino acids 349-377 from the human protein was used as the immunogen for this Progesterone Receptor antibody.

## Storage

Aliquot the Progesterone Receptor antibody and store frozen at -20oC or colder. Avoid repeated freeze-thaw cycles.