

Profilin 2 Antibody / PFN2 (R31282)

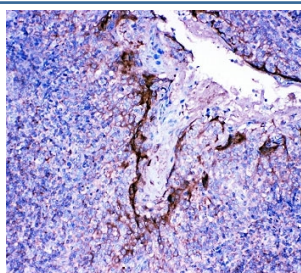
Catalog No.	Formulation	Size
R31282	0.5mg/ml if reconstituted with 0.2ml sterile DI water	100 ug

Bulk quote request

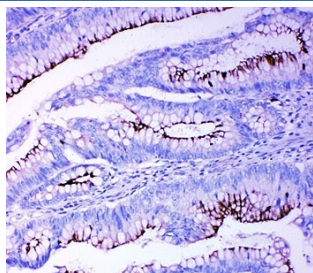
Availability	1-3 business days
Species Reactivity	Human, Mouse, Rat
Format	Antigen affinity purified
Clonality	Polyclonal (rabbit origin)
Isotype	Rabbit IgG
Purity	Antigen affinity
Buffer	Lyophilized from 1X PBS with 2.5% BSA and 0.025% sodium azide/thimerosal
UniProt	P35080
Localization	Cytoplasmic
Applications	Western Blot : 0.5-1ug/ml IHC (FFPE) : 0.5-1ug/ml Flow Cytometry : 1-3ug/million cells
Limitations	This Profilin 2 antibody is available for research use only.



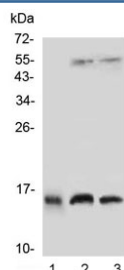
Western blot testing of Profilin 2 antibody and rat brain lysate. Expected/observed size ~15 kDa.



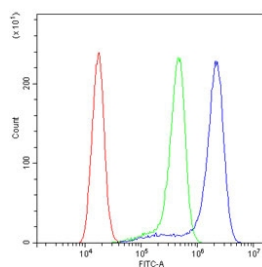
IHC-P: Profilin 2 antibody testing of human tonsil tissue



IHC-P: Profilin 2 antibody testing of human intestinal cancer tissue



Western blot testing of Profilin 2 antibody and 1) human placenta, 2) rat brain and 3) mouse brain lysate. Expected/observed size ~15 kDa.



Flow cytometry testing of human A431 cells with Profilin 2 antibody at 1ug/million cells (blocked with goat sera); Red=cells alone, Green=isotype control, Blue= Profilin 2 antibody.

Description

Profilin-2 is a protein that in humans is encoded by the PFN2 gene. The protein encoded by this gene is a ubiquitous actin monomer-binding protein belonging to the profilin family. This gene is mapped to 3q25.1. It is thought to regulate actin polymerization in response to extracellular signals. There are two alternatively spliced transcript variants encoding different isoforms described for this gene. Profilin-2 binds to actin and affects the structure of the cytoskeleton. At high concentrations, it prevents the polymerization of actin, whereas it enhances it at low concentrations. By binding to PIP2, it inhibits the formation of IP3 and DG.

Application Notes

The stated application concentrations are suggested starting amounts. Titration of the Profilin 2 antibody may be required due to differences in protocols and secondary/substrate sensitivity.

Immunogen

An amino acid sequence from the C-terminus of human PFN2 (NKKAYSMAYLRDSGF) was used as the immunogen for this Profilin 2 antibody (100% homologous in human, mouse and rat).

Storage

After reconstitution, the Profilin 2 antibody can be stored for up to one month at 4oC. For long-term, aliquot and store at -20oC. Avoid repeated freezing and thawing.

