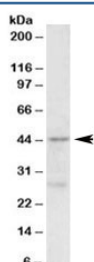


## PRMT6 Antibody (R33955)

Catalog No.	Formulation	Size
R33955-100UG	0.5 mg/ml in 1X TBS, pH7.3, with 0.5% BSA (US sourced) and 0.02% sodium azide	100 ug

[Bulk quote request](#)

Availability	1-3 business days
Species Reactivity	Human
Predicted Reactivity	Mouse, Pig, Rat
Format	Antigen affinity purified
Clonality	Polyclonal (goat origin)
Isotype	Goat Ig
Purity	Antigen affinity
Gene ID	55170
Applications	Western Blot : 0.5-2ug/ml ELISA (peptide) LOD : 1:128000
Limitations	This PRMT6 antibody is available for research use only.



Western blot testing of MCF7 lysate with PRMT6 antibody at 0.5ug/ml. Predicted molecular weight: ~42kDa.

## Description

Additional name(s) for this target protein: Protein arginine methyltransferase 6

## Application Notes

Optimal dilution of the PRMT6 antibody should be determined by the researcher.

## Immunogen

Amino acids ERDQLYYECYSD were used as the immunogen for this PRMT6 antibody. This sequence is specific to

isoform 1.

## **Storage**

Aliquot and store the PRMT6 antibody at -20oC.