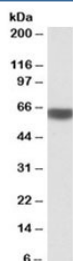


PRKAA2 Antibody (R33301)

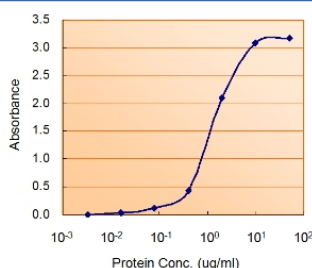
Catalog No.	Formulation	Size
R33301-100UG	0.5 mg/ml in 1X TBS, pH7.3, with 0.5% BSA (US sourced) and 0.02% sodium azide	100 ug

[Bulk quote request](#)

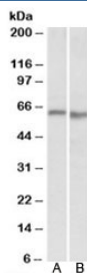
Availability	1-3 business days
Species Reactivity	Human, Mouse, Rat
Predicted Reactivity	Cow, Dog, Pig
Format	Antigen affinity purified
Clonality	Polyclonal (goat origin)
Isotype	Goat Ig
Purity	Antigen affinity
Gene ID	5563
Applications	Western Blot : 0.3-1ug/ml Enzyme ImmunoAssay : binds recombinant protein (use at 1.5-3ug/ml) ELISA (peptide) LOD : 1:16000
Limitations	This PRKAA2 antibody is available for research use only.



Western blot testing of human liver lysate with PRKAA2 antibody at 1ug/ml. Predicted molecular weight: ~62kDa.



Sandwich ELISA with the PRKAA2 antibody used as detect at 1.5ug/ml.



Western blot of mouse (A) and rat (B) heart lysate with PRKAA2 antibody at 0.3ug/ml.
Predicted molecular weight: ~62kDa.

Description

Additional name(s) for this target protein: Protein kinase, AMP-activated, alpha 2 catalytic subunit

Application Notes

Optimal dilution of the PRKAA2 antibody should be determined by the researcher.

Immunogen

Amino acids CPLDALNTTKP were used as the immunogen for this PRKAA2 antibody.

Storage

Aliquot and store the PRKAA2 antibody at -20oC.