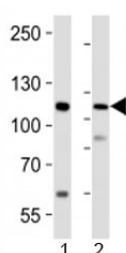


## PRDM16 Antibody (F52795)

Catalog No.	Formulation	Size
F52795-0.4ML	In 1X PBS, pH 7.4, with 0.09% sodium azide	0.4 ml
F52795-0.08ML	In 1X PBS, pH 7.4, with 0.09% sodium azide	0.08 ml

[Bulk quote request](#)

<b>Availability</b>	1-3 business days
<b>Species Reactivity</b>	Human, Mouse
<b>Format</b>	Antigen affinity purified
<b>Clonality</b>	Polyclonal (rabbit origin)
<b>Isotype</b>	Rabbit Ig
<b>Purity</b>	Antigen affinity
<b>UniProt</b>	Q9HAZ2
<b>Applications</b>	Western Blot : 1:1000
<b>Limitations</b>	This PRDM16 antibody is available for research use only.



Western blot analysis of lysate from 1) human LNCaP cell line and 2) mouse lung tissue using PRDM16 antibody at 1:1000.

## Description

Binds DNA and functions as a transcriptional regulator. Functions in the differentiation of brown adipose tissue (BAT) which is specialized in dissipating chemical energy in the form of heat in response to cold or excess feeding while white adipose tissue (WAT) is specialized in the storage of excess energy and the control of systemic metabolism. Together with CEBPB, regulates the differentiation of myoblastic precursors into brown adipose cells. Functions also as a repressor of TGF-beta signaling. Isoform 4 may regulate granulocytes differentiation.

## Application Notes

Titration of the PRDM16 antibody may be required due to differences in protocols and secondary/substrate sensitivity.

## Immunogen

This PRDM16 antibody was produced from a rabbit immunized with a KLH conjugated synthetic peptide between 771-804 amino acids from the Central region of human PRDM16.

## Storage

Aliquot the PRDM16 antibody and store frozen at -20oC or colder. Avoid repeated freeze-thaw cycles.