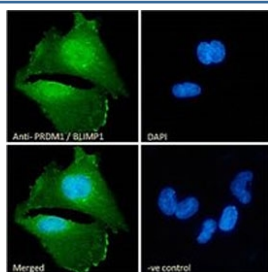


PRDM1 Antibody / BLIMP1 (R34682)

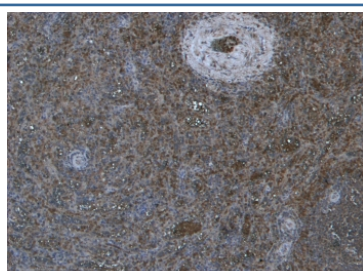
Catalog No.	Formulation	Size
R34682-100UG	0.5 mg/ml in 1X TBS, pH7.3, with 0.5% BSA (US sourced) and 0.02% sodium azide	100 ug

[Bulk quote request](#)

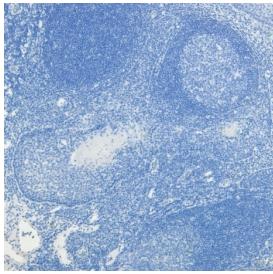
Availability	1-3 business days
Species Reactivity	Human
Predicted Reactivity	Mouse, Rat, Dog, Pig, Cow
Format	Antigen affinity purified
Clonality	Polyclonal (goat origin)
Isotype	Goat Ig
Purity	Antigen affinity
Gene ID	639
Applications	Immunofluorescence : 10ug/ml Immunohistochemistry (FFPE) : 5-6ug/ml ELISA (peptide) LOD : 1:2000
Limitations	This PRDM1 antibody is available for research use only.



IF/ICC staining of fixed and permeabilized human U-251 cells with PRDM11 antibody (green) at 10ug/ml and DAPI nuclear stain (blue).



IHC staining of FFPE human tonsil tissue with PRDM1 antibody at 6ug/ml. HIER: steamed with pH6 citrate buffer, HRP-staining.



Negative control: IHC staining of FFPE human tonsil tissue without PRDM1 antibody.
HIER: steamed with pH6 citrate buffer.

Description

Additional name(s) for this target protein: PR domain containing 1, RP1-134E15.1, BLIMP1

Application Notes

Optimal dilution of the PRDM1 antibody should be determined by the researcher.

Immunogen

Amino acids KVKQETVEPMDP were used as the immunogen for this PRDM1 antibody.

Storage

Aliquot and store the PRDM1 antibody at -20oC.