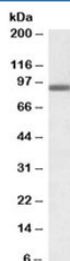


PRDM1 Antibody / BLIMP1 (R33488)

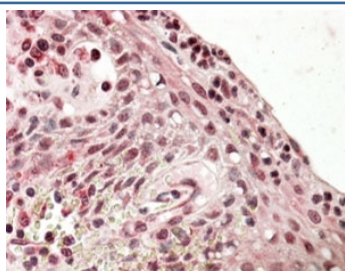
Catalog No.	Formulation	Size
R33488-100UG	0.5 mg/ml in 1X TBS, pH7.3, with 0.5% BSA (US sourced) and 0.02% sodium azide	100 ug

[Bulk quote request](#)

Availability	1-3 business days
Species Reactivity	Human
Predicted Reactivity	Mouse, Rat, Dog, Pig, Cow
Format	Antigen affinity purified
Clonality	Polyclonal (goat origin)
Isotype	Goat Ig
Purity	Antigen affinity
Gene ID	639
Applications	Western Blot : 0.5-1.5ug/ml Immunohistochemistry (FFPE) : suitable ELISA (peptide) LOD : 1:1000
Limitations	This PRDM1 antibody is available for research use only.



Western blot testing of A431 lysate with PRDM1 antibody at 0.3ug/ml. Predicted molecular weight: ~92/77kDa (isoforms 1/2).



IHC staining of FFPE human tonsil with PRDM1 antibody at 4ug/ml. HIER: steamed with pH6 citrate buffer, AP-staining.

Description

Additional name(s) for this target protein: PR domain containing 1; B Lymphocyte Induced Maturation Protein 1

Application Notes

Optimal dilution of the PRDM1 antibody should be determined by the researcher.

Immunogen

Amino acids DISDNADRLEDVED were used as the immunogen for this PRDM1 antibody.

Storage

Aliquot and store the PRDM1 antibody at -20oC.