

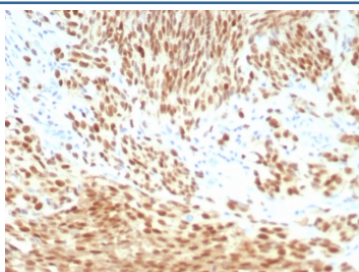
PRAME Antibody / OIP-4 [clone PRAME/8558R] (V4851)

Catalog No.	Formulation	Size
V4851-100UG	0.2 mg/ml in 1X PBS with 0.1 mg/ml BSA (US sourced), 0.05% sodium azide	100 ug
V4851-20UG	0.2 mg/ml in 1X PBS with 0.1 mg/ml BSA (US sourced), 0.05% sodium azide	20 ug
V4851SAF-100UG	1 mg/ml in 1X PBS; BSA free, sodium azide free	100 ug

Recombinant **RABBIT MONOCLONAL**

[Bulk quote request](#)

Availability	1-3 business days
Species Reactivity	Human
Format	Purified
Clonality	Recombinant Rabbit Monoclonal
Isotype	Rabbit IgG, kappa
Clone Name	PRAME/8558R
Purity	Protein A/G affinity
UniProt	P78395
Localization	Nucleus, Cytoplasm, Cell membrane
Applications	Immunohistochemistry (FFPE) : 1-2ug/ml for 30 min at RT
Limitations	This PRAME antibody is available for research use only.



IHC staining of FFPE human melanoma tissue with PRAME antibody (clone PRAME/8558R). HIER: boil tissue sections in pH 9 10mM Tris with 1mM EDTA for 20 min and allow to cool before testing.

Description

Functions as a transcriptional repressor, inhibiting the signaling of retinoic acid through the retinoic acid receptors RARA, RARB and RARG. Prevents retinoic acid-induced cell proliferation arrest, differentiation and apoptosis. This gene encodes an antigen that is preferentially expressed in human melanomas and that is recognized by cytolytic T lymphocytes. It is not expressed in normal tissues, except testis. The encoded protein acts as a repressor of retinoic acid

receptor, and likely confers a growth advantage to cancer cells via this function. Alternative splicing results in multiple transcript variants.

Application Notes

Optimal dilution of the PRAME antibody should be determined by the researcher.

Immunogen

A recombinant partial protein sequence (within amino acids 100-509) from the human protein was used as the immunogen for the PRAME antibody.

Storage

Aliquot the PRAME antibody and store frozen at -20oC or colder. Avoid repeated freeze-thaw cycles.