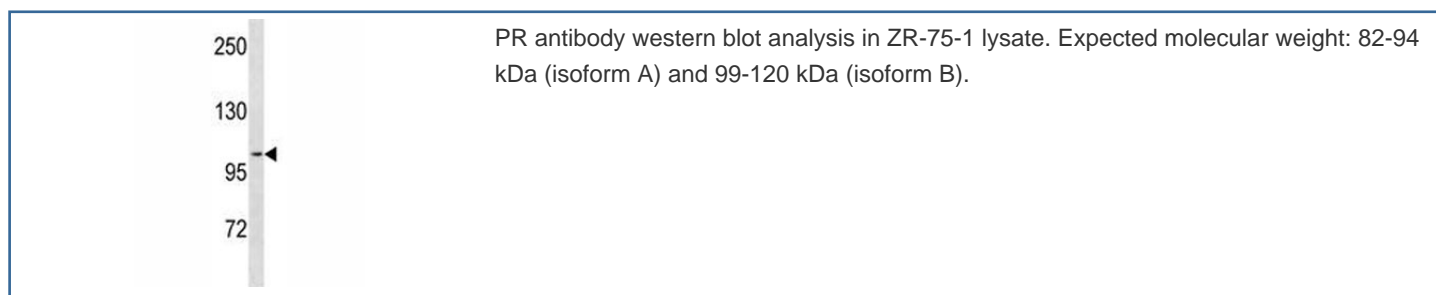


## PR Antibody / Progesterone Receptor / Isoform A & B (F47596)

Catalog No.	Formulation	Size
F47596-0.4ML	In 1X PBS, pH 7.4, with 0.09% sodium azide	0.4 ml
F47596-0.08ML	In 1X PBS, pH 7.4, with 0.09% sodium azide	0.08 ml

**Bulk quote request**

<b>Availability</b>	1-3 business days
<b>Species Reactivity</b>	Human
<b>Predicted Reactivity</b>	Mouse, Rat, Rabbit
<b>Format</b>	Antigen affinity purified
<b>Clonality</b>	Polyclonal (rabbit origin)
<b>Isotype</b>	Rabbit Ig
<b>Purity</b>	Antigen affinity
<b>UniProt</b>	P06401
<b>Localization</b>	Nuclear, cytoplasmic
<b>Applications</b>	Western Blot : 1:1000
<b>Limitations</b>	This PR antibody is available for research use only.



## Description

This gene encodes a member of the steroid receptor superfamily. The encoded protein mediates the physiological effects of progesterone, which plays a central role in reproductive events associated with the establishment and maintenance of pregnancy. This gene uses two distinct promoters and translation start sites in the first exon to produce two isoforms, A and B. The two isoforms are identical except for the additional 165 amino acids found in the N-terminus of isoform B and mediate their own response genes and physiologic effects with little overlap. The location of transcription initiation for

isoform A has not been clearly determined.

## **Application Notes**

Titration of the PR antibody may be required due to differences in protocols and secondary/substrate sensitivity.

## **Immunogen**

A portion of amino acids 833-861 from the human protein was used as the immunogen for this PR antibody.

## **Storage**

Aliquot the PR antibody and store frozen at -20oC or colder. Avoid repeated freeze-thaw cycles.