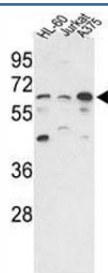


PPP3CC Antibody (F40087)

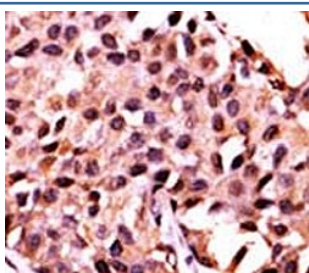
Catalog No.	Formulation	Size
F40087-0.4ML	In 1X PBS, pH 7.4, with 0.09% sodium azide	0.4 ml
F40087-0.08ML	In 1X PBS, pH 7.4, with 0.09% sodium azide	0.08 ml

Bulk quote request

Availability	1-3 business days
Species Reactivity	Human
Format	Purified
Clonality	Polyclonal (rabbit origin)
Isotype	Rabbit Ig
Purity	Purified
UniProt	P48454
Applications	Western Blot : 1:1000 IHC (Paraffin) : 1:50-1:100
Limitations	This PPP3CC antibody is available for research use only.



Western blot analysis of PPP3CC antibody and HL-60, Jurkat, A375 lysate.



IHC analysis of FFPE human breast carcinoma stained with the PPP3CC antibody

Description

Calmodulin-dependent protein phosphatase, calcineurin, is involved in a wide range of biologic activities, acting as a Ca^{2+} -dependent modifier of phosphorylation status. In testis, the motility of the sperm is thought to be controlled by cAMP-dependent phosphorylation and a unique form of calcineurin appears to be associated with the flagellum. The calcineurin holoenzyme is composed of catalytic and regulatory subunits of 60 and 18 kD, respectively. At least 3 genes, calcineurin A-alpha, calcineurin A-beta, and calcineurin A-gamma (CALNA3), have been cloned for the catalytic subunit. These genes have been identified in humans, mice, and rats, and are highly conserved between species (90 to 95% amino acid identity).

Application Notes

Titration of the PPP3CC antibody may be required due to differences in protocols and secondary/substrate sensitivity.

Immunogen

A portion of amino acids 18-47 from the human protein was used as the immunogen for this PPP3CC antibody.

Storage

Aliquot the PPP3CC antibody and store frozen at -20°C or colder. Avoid repeated freeze-thaw cycles.