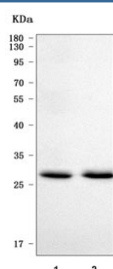


PPP1R3B Antibody / Protein phosphatase 1 regulatory subunit 3B (RQ8236)

Catalog No.	Formulation	Size
RQ8236	0.5mg/ml if reconstituted with 0.2ml sterile DI water	100 ug

Bulk quote request

Availability	1-3 business days
Species Reactivity	Human
Format	Antigen affinity purified
Clonality	Polyclonal (rabbit origin)
Isotype	Rabbit IgG
Purity	Antigen affinity purified
Buffer	Lyophilized from 1X PBS with 2% Trehalose
UniProt	Q86XI6
Applications	Western Blot : 0.5-1ug/ml Direct ELISA : 0.1-0.5ug/ml
Limitations	This PPP1R3B antibody is available for research use only.



Western blot testing of human 1) HCCT and 2) HCCP cell lysate with PPP1R3B antibody. Predicted molecular weight ~33 kDa.

Description

This gene encodes the catalytic subunit of the serine/threonine phosphatase, protein phosphatase-1. The encoded protein is expressed in liver and skeletal muscle tissue and may be involved in regulating glycogen synthesis in these tissues. This gene may be involved in type 2 diabetes and maturity-onset diabetes of the young. Alternate splicing results in multiple transcript variants that encode the same protein.

Application Notes

Optimal dilution of the PPP1R3B antibody should be determined by the researcher.

Immunogen

E. coli-derived recombinant human protein (amino acids M1-Y285) was used as the immunogen for the PPP1R3B antibody.

Storage

After reconstitution, the PPP1R3B antibody can be stored for up to one month at 4°C. For long-term, aliquot and store at -20°C. Avoid repeated freezing and thawing.