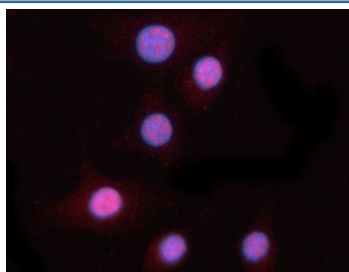


PPM1N Antibody / Probable protein phosphatase 1N (RQ8066)

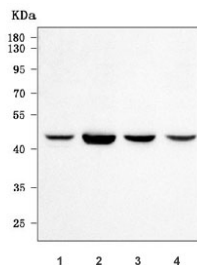
Catalog No.	Formulation	Size
RQ8066	0.5mg/ml if reconstituted with 0.2ml sterile DI water	100 ug

Bulk quote request

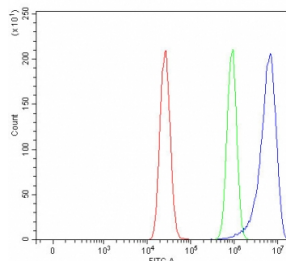
Availability	1-3 business days
Species Reactivity	Human
Format	Antigen affinity purified
Clonality	Polyclonal (rabbit origin)
Isotype	Rabbit IgG
Purity	Antigen affinity purified
Buffer	Lyophilized from 1X PBS with 2% Trehalose
UniProt	Q8N819
Localization	Cytoplasmic, nuclear
Applications	Western Blot : 0.5-1ug/ml Immunofluorescence : 5ug/ml Flow Cytometry : 1-3ug/million cells Direct ELISA : 0.1-0.5ug/ml
Limitations	This PPM1N antibody is available for research use only.



Immunofluorescent staining of FFPE human A549 cells with PPM1N antibody (red) and DAPI nuclear stain (blue). HIER: steam section in pH6 citrate buffer for 20 min.



Western blot testing of human 1) RT4, 2) HEL, 3) K562 and 4) A549 cell lysate with PPM1N antibody. Predicted molecular weight ~46 kDa.



Flow cytometry testing of fixed and permeabilized human MCF7 cells with PPM1N antibody at 1ug/million cells (blocked with goat sera); Red=cells alone, Green=isotype control, Blue= PPM1N antibody.

Description

Predicted to enable metal ion binding activity and protein serine/threonine phosphatase activity. Predicted to be involved in negative regulation of I-kappaB kinase/NF-kappaB signaling and positive regulation of canonical Wnt signaling pathway. Predicted to be active in cytosol and nucleus.

Application Notes

Optimal dilution of the PPM1N antibody should be determined by the researcher.

Immunogen

E. coli-derived recombinant human protein (amino acids R36-A430) was used as the immunogen for the PPM1N antibody.

Storage

After reconstitution, the PPM1N antibody can be stored for up to one month at 4oC. For long-term, aliquot and store at -20oC. Avoid repeated freezing and thawing.