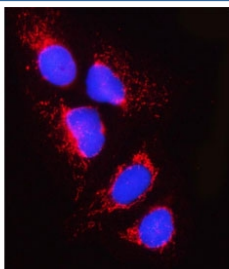


PPM1J Antibody / Protein phosphatase 1J (RQ8257)

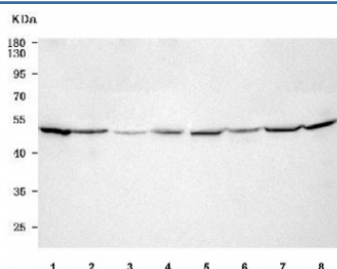
Catalog No.	Formulation	Size
RQ8257	0.5mg/ml if reconstituted with 0.2ml sterile DI water	100 ug

Bulk quote request

Availability	1-3 business days
Species Reactivity	Human, Mouse, Rat
Format	Antigen affinity purified
Clonality	Polyclonal (rabbit origin)
Isotype	Rabbit IgG
Purity	Antigen affinity purified
Buffer	Lyophilized from 1X PBS with 2% Trehalose
UniProt	Q5JR12
Localization	Cytoplasm
Applications	Western Blot : 0.5-1ug/ml Immunofluorescence : 5ug/ml Direct ELISA : 0.1-0.5ug/ml
Limitations	This PPM1J antibody is available for research use only.



Immunofluorescent staining of FFPE human U-2 OS cells with PPM1J antibody (red) and DAPI nuclear stain (blue). HIER: steam section in pH6 citrate buffer for 20 min.



Western blot testing of 1) human HaCaT, 2) human MCF7, 3) human U-2 OS, 4) human A431, 5) rat brain, 6) rat kidney, 7) mouse brain and 8) mouse kidney tissue lysate with PPM1J antibody. Predicted molecular weight ~55 kDa.

Description

This gene encodes the serine/threonine protein phosphatase. The mouse homolog of this gene apparently belongs to the protein phosphatase 2C family of genes. The exact function of this gene is not yet known.

Application Notes

Optimal dilution of the PPM1J antibody should be determined by the researcher.

Immunogen

E. coli-derived recombinant human protein (amino acids K59-D475) was used as the immunogen for the PPM1J antibody.

Storage

After reconstitution, the PPM1J antibody can be stored for up to one month at 4°C. For long-term, aliquot and store at -20°C. Avoid repeated freezing and thawing.