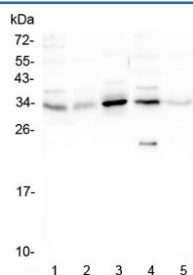


PPA1 Antibody / Inorganic pyrophosphatase (RQ4924)

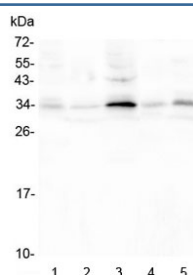
Catalog No.	Formulation	Size
RQ4924	0.5mg/ml if reconstituted with 0.2ml sterile DI water	100 ug

Bulk quote request

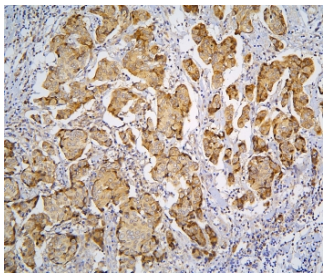
Availability	1-3 business days
Species Reactivity	Human, Mouse, Rat
Format	Antigen affinity purified
Clonality	Polyclonal (rabbit origin)
Isotype	Rabbit IgG
Purity	Antigen affinity purified
Buffer	Lyophilized from 1X PBS with 2% Trehalose and 0.025% sodium azide
UniProt	Q15181
Localization	Cytoplasmic
Applications	Western Blot : 0.5-1ug/ml Immunohistochemistry (FFPE) : 1-2ug/ml Direct ELISA : 0.1-0.5ug/ml
Limitations	This PPA1 antibody is available for research use only.



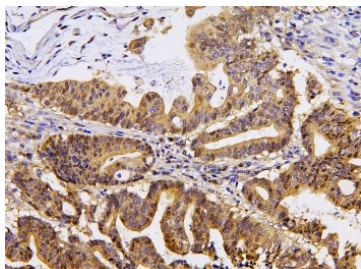
Western blot testing of human 1) PC-3, 2) Caco-2, 3) HEK293, 4) K562 and 5) U-2 OS lysate with PPA1 antibody at 0.5ug/ml. Predicted molecular weight: ~33 kDa.



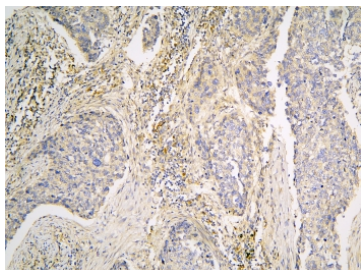
Western blot testing of 1) rat thymus, 2) rat kidney, 3) rat testis, 4) mouse kidney and 5) mouse testis lysate with PPA1 antibody at 0.5ug/ml. Predicted molecular weight: ~33 kDa.



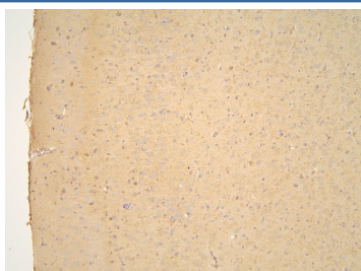
IHC staining of FFPE human breast cancer with PPA1 antibody at 1ug/ml. HIER: boil tissue sections in pH6, 10mM citrate buffer, for 10-20 min and allow to cool before testing.



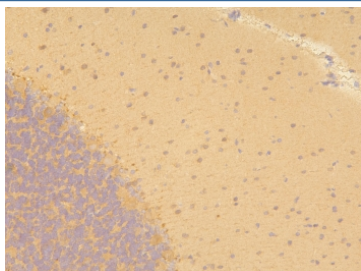
IHC staining of FFPE human intestinal cancer with PPA1 antibody at 1ug/ml. HIER: boil tissue sections in pH6, 10mM citrate buffer, for 10-20 min and allow to cool before testing.



IHC staining of FFPE human lung cancer with PPA1 antibody at 1ug/ml. HIER: boil tissue sections in pH6, 10mM citrate buffer, for 10-20 min and allow to cool before testing.



IHC staining of FFPE mouse brain with PPA1 antibody at 1ug/ml. HIER: boil tissue sections in pH6, 10mM citrate buffer, for 10-20 min and allow to cool before testing.



IHC staining of FFPE rat brain with PPA1 antibody at 1ug/ml. HIER: boil tissue sections in pH6, 10mM citrate buffer, for 10-20 min and allow to cool before testing.

Description

PPA1 is a member of the inorganic pyrophosphatase (PPase) family. PPases catalyze the hydrolysis of pyrophosphate to inorganic phosphate, which is important for the phosphate metabolism of cells. Studies of a similar protein in bovine suggested a cytoplasmic localization of this enzyme. By radiation hybrid analysis, the PPA1 gene is mapped to chromosome 10q21.3.

Application Notes

Optimal dilution of the PPA1 antibody should be determined by the researcher.

Immunogen

Amino acids E7-N236 from the human protein were used as the immunogen for the PPA1 antibody.

Storage

After reconstitution, the PPA1 antibody can be stored for up to one month at 4°C. For long-term, aliquot and store at -20°C. Avoid repeated freezing and thawing.