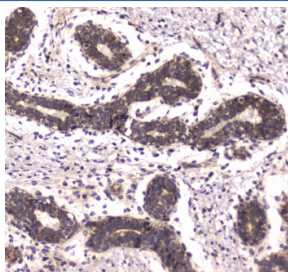


POLR2A Antibody / RNA polymerase II subunit B1 (RQ4276)

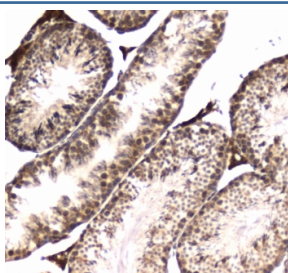
Catalog No.	Formulation	Size
RQ4276	0.5mg/ml if reconstituted with 0.2ml sterile DI water	100 ug

Bulk quote request

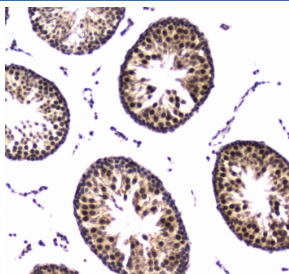
Availability	1-3 business days
Species Reactivity	Human, Mouse, Rat
Format	Antigen affinity purified
Clonality	Polyclonal (rabbit origin)
Isotype	Rabbit IgG
Purity	Antigen affinity purified
Buffer	Lyophilized from 1X PBS with 2% Trehalose and 0.025% sodium azide
UniProt	P24928
Localization	Nuclear, cytoplasmic
Applications	IHC (FFPE) : 1-2ug/ml Direct ELISA : 0.1-0.5ug/ml
Limitations	This POLR2A antibody is available for research use only.



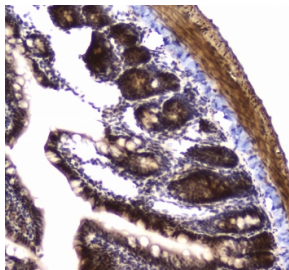
IHC testing of FFPE human breast cancer tissue with POLR2A antibody. HIER: boil tissue sections in pH6, 10mM citrate buffer, for 10-20 min followed by cooling at RT for 20 min.



IHC testing of FFPE mouse testis tissue with POLR2A antibody. HIER: boil tissue sections in pH6, 10mM citrate buffer, for 10-20 min followed by cooling at RT for 20 min.



IHC testing of FFPE rat testis tissue with POLR2A antibody. HIER: boil tissue sections in pH6, 10mM citrate buffer, for 10-20 min followed by cooling at RT for 20 min.



IHC testing of FFPE rat small intestine tissue with POLR2A antibody. HIER: boil tissue sections in pH6, 10mM citrate buffer, for 10-20 min followed by cooling at RT for 20 min.

Description

DNA-directed RNA polymerase II subunit RPB1, also known as RPB1, is an enzyme that in humans is encoded by the POLR2A gene. This gene encodes the largest subunit of RNA polymerase II, the polymerase responsible for synthesizing messenger RNA in eukaryotes. The product of this gene contains a carboxy terminal domain composed of heptapeptide repeats that are essential for polymerase activity. These repeats contain serine and threonine residues that are phosphorylated in actively transcribing RNA polymerase. In addition, this subunit, in combination with several other polymerase subunits, forms the DNA binding domain of the polymerase, a groove in which the DNA template is transcribed into RNA.

Application Notes

Optimal dilution of the POLR2A antibody should be determined by the researcher.

Immunogen

A recombinant human protein corresponding to amino acids A1148-H1384 was used as the immunogen for the POLR2A antibody.

Storage

After reconstitution, the POLR2A antibody can be stored for up to one month at 4°C. For long-term, aliquot and store at -20°C. Avoid repeated freezing and thawing.