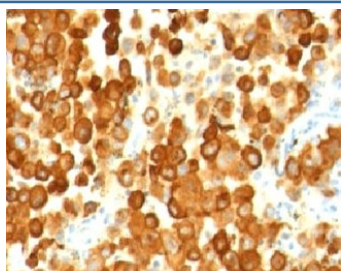


PMEL17 Antibody / Melanoma gp100 [clone PMEL/783] (V2856)

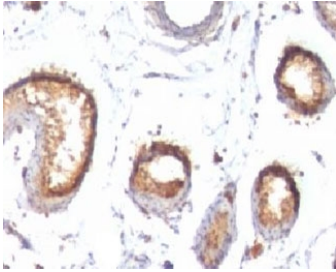
Catalog No.	Formulation	Size
V2856-100UG	0.2 mg/ml in 1X PBS with 0.1 mg/ml BSA (US sourced) and 0.05% sodium azide	100 ug
V2856-20UG	0.2 mg/ml in 1X PBS with 0.1 mg/ml BSA (US sourced) and 0.05% sodium azide	20 ug
V2856SAF-100UG	1 mg/ml in 1X PBS; BSA free, sodium azide free	100 ug
V2856IHC-7ML	Prediluted in 1X PBS with 0.1 mg/ml BSA (US sourced) and 0.05% sodium azide; *For IHC use only*	7 ml

[Bulk quote request](#)

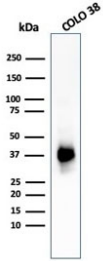
Availability	1-3 business days
Species Reactivity	Human
Format	Purified
Clonality	Monoclonal (mouse origin)
Isotype	Mouse IgG1, kappa
Clone Name	PMEL/783
Purity	Protein G affinity chromatography
UniProt	P40967
Localization	Cytoplasmic
Applications	Western Blot : 1-2ug/ml Immunohistochemistry (FFPE) : 1-2ug/ml for 30 min at RT (1) (2)
Limitations	This PMEL17 antibody is available for research use only.



IHC: Formalin-fixed, paraffin-embedded human melanoma stained with PMEL17 antibody (PMEL/783).



IHC: Formalin-fixed, paraffin-embedded human testis stained with PMEL17 antibody (PMEL/783).



Western blot testing of human COLO-38 cell lysate with PMEL17 antibody (clone PMEL/783).

Description

Application Notes

Optimal dilution of the PMEL17 antibody should be determined by the researcher.

1. Staining of formalin-fixed tissues requires boiling tissue sections in pH 9 10mM Tris with 1mM EDTA for 10-20 min followed by cooling at RT for 20 min.
2. The prediluted format is supplied in a dropper bottle and is optimized for use in IHC. After epitope retrieval step (if required), drip mAb solution onto the tissue section and incubate at RT for 30 min.

Immunogen

Recombinant human protein was used as the immunogen for the PMEL17 antibody.

Storage

Store the PMEL17 antibody at 2-8°C (with azide) or aliquot and store at -20°C or colder (without azide).