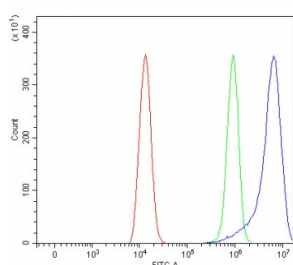


PLVAP Antibody / PV-1 (RQ8011)

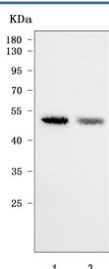
Catalog No.	Formulation	Size
RQ8011	0.5mg/ml if reconstituted with 0.2ml sterile DI water	100 ug

Bulk quote request

Availability	1-3 business days
Species Reactivity	Human
Format	Antigen affinity purified
Clonality	Polyclonal (rabbit origin)
Isotype	Rabbit IgG
Purity	Antigen affinity purified
Buffer	Lyophilized from 1X PBS with 2% Trehalose
UniProt	Q9BX97
Applications	Western Blot : 0.5-1ug/ml Flow Cytometry : 1-3ug/million cells Direct ELISA : 0.1-0.5ug/ml
Limitations	This PLVAP antibody is available for research use only.



Flow cytometry testing of fixed and permeabilized human HEL cells with PLVAP antibody at 1ug/million cells (blocked with goat sera); Red=cells alone, Green=isotype control, Blue= PLVAP antibody.



Western blot testing of human 1) 293T and 2) HEL cell lysate with PLVAP antibody. Predicted molecular weight ~51 kDa.

Description

Plasmalemma vesicle-associated protein (PLVAP), also called Plasmalemma vesicle protein 1 (PV-1), is a protein that in humans is encoded by the PLVAP gene. Predicted to enable identical protein binding activity. Involved in MAPK cascade; positive regulation of cellular extravasation; and tumor necrosis factor-mediated signaling pathway. Located in cell surface. Colocalizes with caveola. Implicated in congenital diarrhea.

Application Notes

Optimal dilution of the PLVAP antibody should be determined by the researcher.

Immunogen

E. coli-derived recombinant human protein (amino acids N51-K422) was used as the immunogen for the PLVAP antibody.

Storage

After reconstitution, the PLVAP antibody can be stored for up to one month at 4°C. For long-term, aliquot and store at -20°C. Avoid repeated freezing and thawing.