

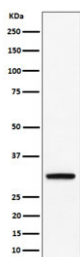
PLSCR3 Antibody / Phospholipid scramblase 3 [clone 29P13] (RQ8853)

Catalog No.	Formulation	Size
RQ8853	Antibody in PBS with 0.02% sodium azide, 50% glycerol and 0.4-0.5mg/ml BSA	100 ul

Recombinant RABBIT MONOCLONAL

[Bulk quote request](#)

Availability	1-3 days
Species Reactivity	Human, Mouse, Rat
Format	Purified
Clonality	Recombinant Rabbit Monoclonal
Isotype	Rabbit IgG
Clone Name	29P13
Purity	Affinity chromatography
UniProt	Q9NRY6
Applications	Western Blot : 1:500-1:2000
Limitations	This PLSCR3 antibody is available for research use only.



Western blot testing of human BxPC-3 cell lysate with PLSCR3 antibody. Predicted molecular weight ~32 kDa.

Description

During apoptosis, PLSCR3 becomes activated and promotes the exposure of phosphatidylserine on the outer leaflet of the cell membrane. This signals neighboring cells and phagocytes to engulf the dying cell, preventing inflammation and maintaining tissue homeostasis. Recent studies have highlighted the role of PLSCR3 in cancer progression. Dysregulation of PLSCR3 expression has been linked to tumor growth, metastasis, and drug resistance.

Application Notes

Optimal dilution of the PLSCR3 antibody should be determined by the researcher.

Immunogen

A synthetic peptide specific to human Phospholipid scramblase 3 protein was used as the immunogen for the PLSCR3 antibody.

Storage

Store the PLSCR3 antibody at -20oC.