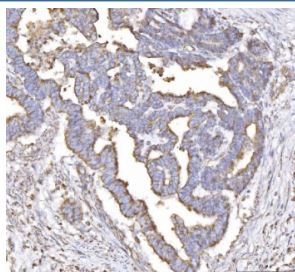


## PLP2 Antibody / Proteolipid protein 2 (RQ7056)

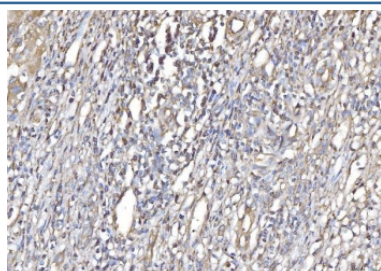
Catalog No.	Formulation	Size
RQ7056	0.5mg/ml if reconstituted with 0.2ml sterile DI water	100 ug

**Bulk quote request**

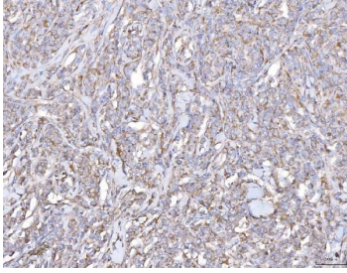
<b>Availability</b>	1-3 business days
<b>Species Reactivity</b>	Human
<b>Format</b>	Antigen affinity purified
<b>Clonality</b>	Polyclonal (rabbit origin)
<b>Isotype</b>	Rabbit IgG
<b>Purity</b>	Antigen affinity purified
<b>Buffer</b>	Lyophilized from 1X PBS with 2% Trehalose
<b>UniProt</b>	Q04941
<b>Applications</b>	Western Blot : 0.5-1 ug/ml Immunohistochemistry (FFPE) : 2-5ug/ml Flow Cytometry : 1-3ug/million cells Direct ELISA : 0.1-0.5ug/ml
<b>Limitations</b>	This PLP2 antibody is available for research use only.



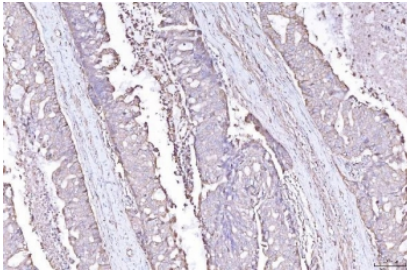
IHC staining of FFPE human cervical cancer tissue with PLP2 antibody. HIER: boil tissue sections in pH8 EDTA for 20 min and allow to cool before testing.



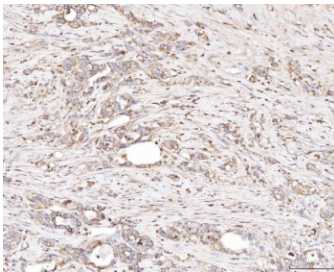
IHC staining of FFPE human liver cancer tissue with PLP2 antibody. HIER: boil tissue sections in pH8 EDTA for 20 min and allow to cool before testing.



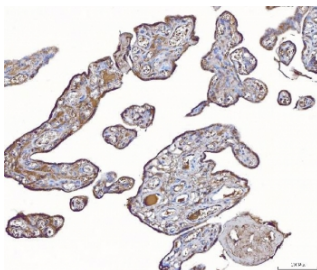
IHC staining of FFPE human lymphoma tissue with PLP2 antibody. HIER: boil tissue sections in pH8 EDTA for 20 min and allow to cool before testing.



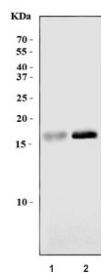
IHC staining of FFPE human adenocarcinoma of the right colon tissue with PLP2 antibody. HIER: boil tissue sections in pH8 EDTA for 20 min and allow to cool before testing.



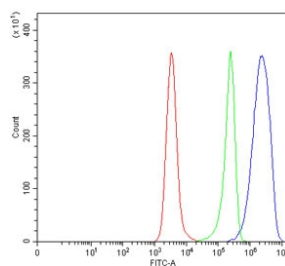
IHC staining of FFPE human gastric carcinoma tissue with PLP2 antibody. HIER: boil tissue sections in pH8 EDTA for 20 min and allow to cool before testing.



IHC staining of FFPE human placental tissue with PLP2 antibody. HIER: boil tissue sections in pH8 EDTA for 20 min and allow to cool before testing.



Western blot testing of human 1) COLO-320 and 2) A431 cell lysate with PLP2 antibody. Predicted molecular weight ~17 kDa.



Flow cytometry testing of human Daudi cells with PLP2 antibody at 1ug/million cells (blocked with goat sera); Red=cells alone, Green=isotype control, Blue= PLP2 antibody.

## Description

Proteolipid protein 2 is a protein that in humans is encoded by the PLP2 gene. This gene encodes an integral membrane protein that localizes to the endoplasmic reticulum in colonic epithelial cells. The encoded protein can multimerize and may function as an ion channel. A polymorphism in the promoter of this gene may be linked to an increased risk of X-linked cognitive disability. A pseudogene of this gene is found on chromosome 5.

## Application Notes

Optimal dilution of the PLP2 antibody should be determined by the researcher.

## Immunogen

Recombinant human protein (amino acids N18-V152) was used as the immunogen for the PLP2 antibody.

## Storage

After reconstitution, the PLP2 antibody can be stored for up to one month at 4°C. For long-term, aliquot and store at -20°C. Avoid repeated freezing and thawing.