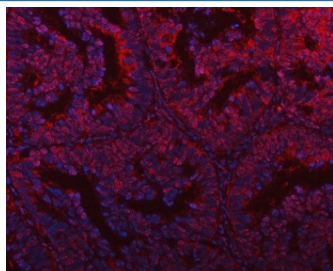


PLEKHG5 Antibody / Pleckstrin homology domain-containing family G member 5 (RQ8010)

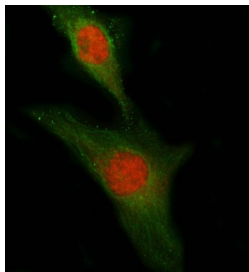
Catalog No.	Formulation	Size
RQ8010	0.5mg/ml if reconstituted with 0.2ml sterile DI water	100 ug

[Bulk quote request](#)

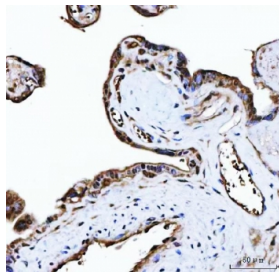
Availability	1-3 business days
Species Reactivity	Human
Format	Antigen affinity purified
Clonality	Polyclonal (rabbit origin)
Isotype	Rabbit IgG
Purity	Antigen affinity purified
Buffer	Lyophilized from 1X PBS with 2% Trehalose
UniProt	A0A5F9ZHW8
Localization	Nuclear, cytoplasmic
Applications	Western Blot : 0.5-1ug/ml Immunohistochemistry (FFPE) : 2-5ug/ml Immunofluorescence : 5ug/ml Direct ELISA : 0.1-0.5ug/ml
Limitations	This PLEKHG5 antibody is available for research use only.



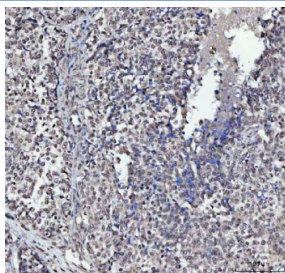
Immunofluorescent staining of FFPE human intestinal cancer tissue with PLEKHG5 antibody (red) and DAPI nuclear stain (blue). HIER: steam section in pH8 EDTA buffer for 20 min.



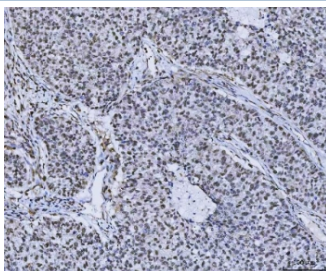
Immunofluorescent staining of FFPE human HeLa cells with PLEKHG5 antibody (red) and Alpha tubulin mAb (green). HIER: steam section in pH6 citrate buffer for 20 min.



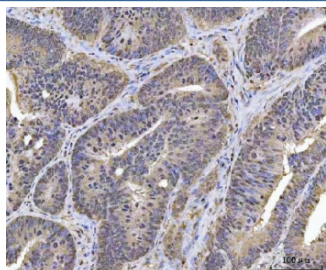
IHC staining of FFPE human placental tissue with PLEKHG5 antibody. HIER: boil tissue sections in pH8 EDTA for 20 min and allow to cool before testing.



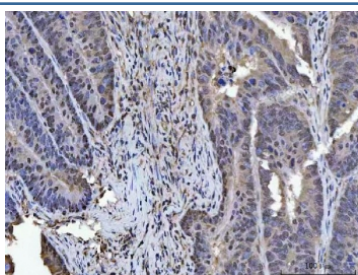
IHC staining of FFPE human poorly differentiated adenocarcinoma of the ovary with PLEKHG5 antibody. HIER: boil tissue sections in pH8 EDTA for 20 min and allow to cool before testing.



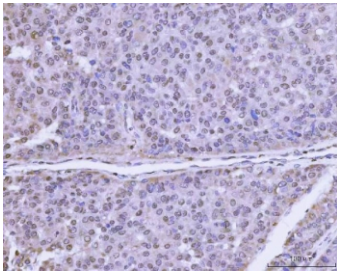
IHC staining of FFPE human non-small-cell lung carcinoma tissue with PLEKHG5 antibody. HIER: boil tissue sections in pH8 EDTA for 20 min and allow to cool before testing.



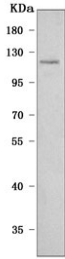
IHC staining of FFPE human colorectal adenocarcinoma tissue with PLEKHG5 antibody. HIER: boil tissue sections in pH8 EDTA for 20 min and allow to cool before testing.



IHC staining of FFPE human colorectal adenocarcinoma tissue with PLEKHG5 antibody. HIER: boil tissue sections in pH8 EDTA for 20 min and allow to cool before testing.



IHC staining of FFPE human liver cancer tissue with PLEKHG5 antibody. HIER: boil tissue sections in pH8 EDTA for 20 min and allow to cool before testing.



Western blot testing of human SH-SY5Y cell lysate with PLEKHG5 antibody. Predicted molecular weight ~122 kDa.

Description

Pleckstrin homology domain containing, family G member 5 (PLEKHG5) is a protein that in humans is encoded by the PLEKHG5 gene. This gene encodes a protein that activates the nuclear factor kappa B (NFkB1) signaling pathway. Mutations in this gene are associated with autosomal recessive distal spinal muscular atrophy. Multiple transcript variants encoding different isoforms have been found for this gene.

Application Notes

Optimal dilution of the PLEKHG5 antibody should be determined by the researcher.

Immunogen

E. coli-derived recombinant human protein (amino acids Q58-K974) was used as the immunogen for the PLEKHG5 antibody.

Storage

After reconstitution, the PLEKHG5 antibody can be stored for up to one month at 4°C. For long-term, aliquot and store at -20°C. Avoid repeated freezing and thawing.