

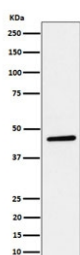
## PLEKHA1 Antibody / PH domain-containing family A member 1 / TAPP1 [clone 29P53] (RQ8714)

Catalog No.	Formulation	Size
RQ8714	Antibody in PBS with 0.02% sodium azide, 50% glycerol and 0.4-0.5mg/ml BSA	100 ul

Recombinant **RABBIT MONOCLONAL**

[Bulk quote request](#)

Availability	1-3 days
Species Reactivity	Human
Format	Purified
Clonality	Recombinant Rabbit Monoclonal
Isotype	Rabbit IgG
Clone Name	29P53
Purity	Affinity chromatography
UniProt	Q9HB21
Applications	Western Blot : 1:500-1:2000
Limitations	This PLEKHA1 antibody is available for research use only.



Western blot testing of human HeLa cell lysate with PLEKHA1 antibody. Predicted molecular weight ~46 kDa.

### Description

Pleckstrin homology domain-containing family A member 1, also called Tandem PH domain-containing protein 1 (TAPP-1), is a protein that in humans is encoded by the PLEKHA1 gene. This gene encodes a pleckstrin homology domain-containing adapter protein. The encoded protein is localized to the plasma membrane where it specifically binds phosphatidylinositol 3,4-bisphosphate.

### Application Notes

Optimal dilution of the PLEKHA1 antibody should be determined by the researcher.

## **Immunogen**

A synthetic peptide specific to human PH domain-containing family A member 1 protein was used as the immunogen for the PLEKHA1 antibody.

## **Storage**

Store the PLEKHA1 antibody at -20oC.