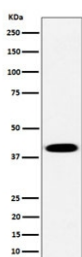


PLEK Antibody / Pleckstrin [clone 28P96] (RQ8727)

Catalog No.	Formulation	Size
RQ8727	Antibody in PBS with 0.02% sodium azide, 50% glycerol and 0.4-0.5mg/ml BSA	100 ul

[Bulk quote request](#)

Availability	1-3 days
Species Reactivity	Human
Format	Purified
Clonality	Rabbit Monoclonal
Isotype	Rabbit IgG
Clone Name	28P96
Purity	Affinity chromatography
UniProt	P08567
Applications	Western Blot : 1:500-1:2000
Limitations	This PLEK antibody is available for research use only.



Western blot testing of human Raji cell lysate with PLEK antibody. Predicted molecular weight ~40 kDa.

Description

Major protein kinase C substrate of platelets. [UniProt]

Application Notes

Optimal dilution of the PLEK antibody should be determined by the researcher.

Immunogen

A synthetic peptide specific to human Pleckstrin protein was used as the immunogen for the PLEK Antibody.

Storage

Store the PLEK antibody at -20oC.