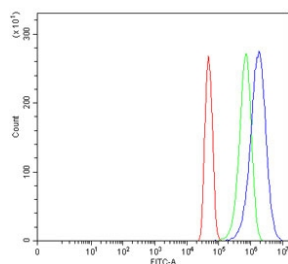


Platelet-derived growth factor C Antibody / PDGFC (RQ6785)

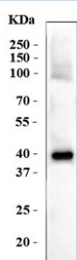
Catalog No.	Formulation	Size
RQ6785	0.5mg/ml if reconstituted with 0.2ml sterile DI water	100 ug

Bulk quote request

Availability	1-3 business days
Species Reactivity	Human
Format	Antigen affinity purified
Clonality	Polyclonal (rabbit origin)
Isotype	Rabbit IgG
Purity	Antigen affinity purified
Buffer	Lyophilized from 1X PBS with 2% Trehalose
UniProt	Q9NRA1
Applications	Western Blot : 1-2ug/ml Flow Cytometry : 1-3ug/million cells Direct ELISA : 0.1-0.5ug/ml
Limitations	This Platelet-derived growth factor C antibody is available for research use only.



Flow cytometry testing of human U-251 cells with Platelet-derived growth factor C antibody at 1ug/million cells (blocked with goat sera); Red=cells alone, Green=isotype control, Blue= Platelet-derived growth factor C antibody.



Western blot testing of human MDA-MB-453 cell lysate with Platelet-derived growth factor C antibody. Predicted molecular weight ~39 kDa.

Description

Platelet-derived growth factor C, also known as PDGF-C, is a 345-amino acid protein that in humans is encoded by the PDGFC gene. The protein encoded by this gene is a member of the platelet-derived growth factor family. The four members of this family are mitogenic factors for cells of mesenchymal origin and are characterized by a core motif of eight cysteines. This gene product appears to form only homodimers. It differs from the platelet-derived growth factor alpha and beta polypeptides in having an unusual N-terminal domain, the CUB domain. Alternatively spliced transcript variants have been found for this gene.

Application Notes

Optimal dilution of the Platelet-derived growth factor C antibody should be determined by the researcher.

Immunogen

Recombinant human protein (amino acids L288-G345) was used as the immunogen for the Platelet-derived growth factor C antibody.

Storage

After reconstitution, the Platelet-derived growth factor C antibody can be stored for up to one month at 4°C. For long-term, aliquot and store at -20°C. Avoid repeated freezing and thawing.