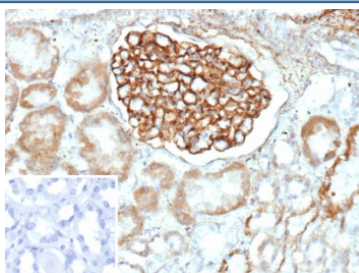


PLA2R1 Antibody / Phospholipase A2 receptor 1 [clone PLA2R1/4893] (V5697)

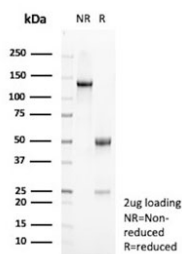
Catalog No.	Formulation	Size
V5697-100UG	0.2 mg/ml in 1X PBS with 0.1 mg/ml BSA (US sourced), 0.05% sodium azide	100 ug
V5697-20UG	0.2 mg/ml in 1X PBS with 0.1 mg/ml BSA (US sourced), 0.05% sodium azide	20 ug
V5697SAF-100UG	1 mg/ml in 1X PBS; BSA free, sodium azide free	100 ug

[Bulk quote request](#)

Availability	1-3 business days
Species Reactivity	Human
Format	Purified
Clonality	Monoclonal (mouse origin)
Isotype	Mouse IgG2, kappa
Clone Name	PLA2R1/4893
Purity	Protein A affinity
UniProt	Q13018
Localization	Cell membrane, Secreted
Applications	Immunohistochemistry (FFPE) : 1-2ug/ml
Limitations	This PLA2R1 antibody is available for research use only.



IHC staining of FFPE human kidney tissue with PLA2R1 antibody (clone PLA2R1/4893). Inset: PBS used in place of primary Ab (secondary Ab negative control). HIER: boil tissue sections in pH 9 10mM Tris with 1mM EDTA for 20 min and allow to cool before testing.



SDS-PAGE analysis of purified, BSA-free PLA2R1 antibody (clone PLA2R1/4893) as confirmation of integrity and purity.

Description

Receptor for secretory phospholipase A2 (sPLA2). Acts as a receptor for phospholipase sPLA2-IB/PLA2G1B but not sPLA2-IIA/PLA2G2A. Also able to bind to snake PA2-like toxins. Although its precise function remains unclear, binding of sPLA2 to its receptor participates in both positive and negative regulation of sPLA2 functions as well as clearance of sPLA2. [UniProt]

Application Notes

Optimal dilution of the PLA2R1 antibody should be determined by the researcher.

Immunogen

A portion of amino acids 300-600 from human PLA2R1 protein was used as the immunogen for the PLA2R1 antibody.

Storage

Aliquot the PLA2R1 antibody and store frozen at -20oC or colder. Avoid repeated freeze-thaw cycles.