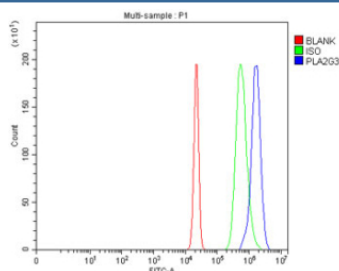


PLA2G3 Antibody / sPLA2-III (RQ8852)

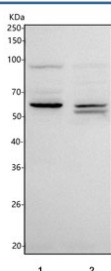
Catalog No.	Formulation	Size
RQ8852	0.5mg/ml if reconstituted with 0.2ml sterile DI water	100 ug

Bulk quote request

Availability	1-2 days
Species Reactivity	Human, Mouse
Format	Antigen affinity purified
Clonality	Polyclonal (rabbit origin)
Isotype	Rabbit IgG
Purity	Antigen affinity chromatography
Buffer	Lyophilized from 1X PBS with 2% Trehalose
UniProt	Q9NZ20
Applications	Western Blot : 1-2ug/ml Flow Cytometry : 1-3ug/million cells ELISA : 0.1-0.5ug/ml
Limitations	This PLA2G3 antibody is available for research use only.



Flow cytometry testing of fixed and permeabilized human HepG2 cells with PLA2G3 antibody at 1ug/million cells (blocked with goat sera); Red=cells alone, Green=isotype control, Blue= PLA2G3 antibody.



Western blot testing of 1) human K562 and 2) mouse testis tissue lysate with PLA2G3 antibody. Predicted molecular weight ~57 kDa but may be observed at higher molecular weights due to glycosylation.

Description

This gene encodes a protein that belongs to the secreted phospholipase A2 family, whose members include the bee venom enzyme. The encoded enzyme functions in lipid metabolism and catalyzes the calcium-dependent hydrolysis of the sn-2 acyl bond of phospholipids to release arachidonic acid and lysophospholipids. This enzyme acts as a negative regulator of ciliogenesis, and may play a role in cancer development by stimulating tumor cell growth and angiogenesis. This gene is associated with oxidative stress, and polymorphisms in this gene are linked to risk for Alzheimer's disease.

Application Notes

Optimal dilution of the PLA2G3 antibody should be determined by the researcher.

Immunogen

An E.coli-derived human recombinant protein (amino acids E74-R358) was used as the immunogen for the PLA2G3 antibody.

Storage

After reconstitution, the PLA2G3 antibody can be stored for up to one month at 4°C. For long-term, aliquot and store at -20°C. Avoid repeated freezing and thawing.