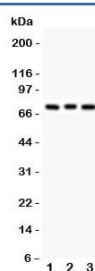


PKC beta Antibody / PRKCB (R31732)

Catalog No.	Formulation	Size
R31732	0.5mg/ml if reconstituted with 0.2ml sterile DI water	100 ug

Bulk quote request

Availability	1-3 business days
Species Reactivity	Human, Mouse, Rat
Format	Antigen affinity purified
Clonality	Polyclonal (rabbit origin)
Isotype	Rabbit IgG
Purity	Antigen affinity
Buffer	Lyophilized from 1X PBS with 2.5% BSA and 0.025% sodium azide
Gene ID	5579
Applications	Western Blot : 0.5-1ug/ml
Limitations	This PKC beta antibody is available for research use only.



Western blot testing of PKC beta antibody and lysate from 1: rat brain; 2: mouse brain; 3: human COLO320 cells. Predicted molecular weight ~76 kDa.

Description

Protein kinase C beta type is an enzyme that in humans is encoded by the PRKCB gene. It is a member of the protein kinase C (PKC) gene family. Family members phosphorylate a wide variety of protein targets and are known to be involved in diverse cellular signaling pathways. Family members also serve as major receptors for phorbol esters, a class of tumor promoters. PKC beta has been reported to be involved in many different cellular functions, such as B cell activation, apoptosis induction, endothelial cell proliferation, and intestinal sugar absorption. It has been found that it is activated by oxidative conditions in the cell, induces phosphorylation of [p66 \(SHC\)](#) and triggers mitochondrial accumulation of the protein after it is recognized by the prolyl isomerase [PIN1](#).

Application Notes

The stated application concentrations are suggested starting amounts. Titration of the PKC beta antibody may be required due to differences in protocols and secondary/substrate sensitivity.

Immunogen

Human partial recombinant protein (AA 542-671) was used as the immunogen for this PKC beta antibody.

Storage

After reconstitution, the PKC beta antibody can be stored for up to one month at 4°C. For long-term, aliquot and store at -20°C. Avoid repeated freezing and thawing.