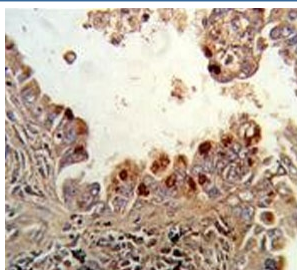


PKC alpha Antibody / PRKCA (F54980)

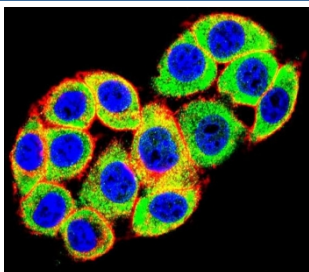
Catalog No.	Formulation	Size
F54980-0.4ML	In 1X PBS, pH 7.4, with 0.09% sodium azide	0.4 ml
F54980-0.08ML	In 1X PBS, pH 7.4, with 0.09% sodium azide	0.08 ml

Bulk quote request

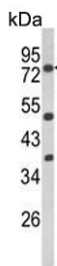
Availability	1-3 business days
Species Reactivity	Human, Mouse
Format	Purified
Clonality	Polyclonal (rabbit origin)
Isotype	Rabbit Ig
Purity	Purified
UniProt	P17252
Localization	Cytoplasmic, nuclear
Applications	Immunofluorescence : 1:25 Flow Cytometry : 1:25 (1x10e6 cells) Immunohistochemistry (FFPE) : 1:25 Western Blot : 1:500-1:2000
Limitations	This PKC alpha antibody is available for research use only.



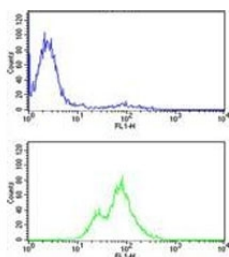
IHC testing of FFPE human lung carcinoma tissue with PKC alpha antibody. HIER: steam section in pH6 citrate buffer for 20 min and allow to cool prior to staining.



Immunofluorescent staining of human HeLa cells with PKC alpha antibody (green), DAPI nuclear stain (blue) and anti-Actin (red).



Western blot testing of mouse NIH 3T3 cell lysate with PKC alpha antibody. Predicted molecular weight ~77 kDa.



Flow cytometry testing of human CEM cells with PKC alpha antibody; Blue=isotype control, Green= PKC alpha antibody.

Description

PRKCA is a calcium-activated, phospholipid-dependent, serine-and threonine-specific enzyme. It may play a role in cell motility by phosphorylating CSPG4. PKC is activated by diacylglycerol which in turn phosphorylates a range of cellular proteins. PKC also serves as the receptor for phorbol esters, a class of tumor promoters.

Application Notes

The stated application concentrations are suggested starting points. Titration of the PKC alpha antibody may be required due to differences in protocols and secondary/substrate sensitivity.

Immunogen

A portion of amino acids 75-103 from the human protein was used as the immunogen for the PKC alpha antibody.

Storage

Aliquot the PKC alpha antibody and store frozen at -20oC or colder. Avoid repeated freeze-thaw cycles.