

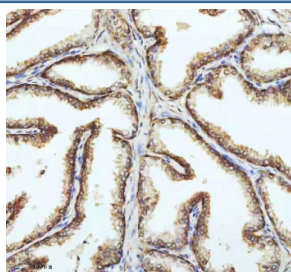
PIN4 Antibody / Peptidyl-prolyl cis-trans isomerase NIMA-interacting 4 [clone 29P19] (RQ8677)

Catalog No.	Formulation	Size
RQ8677	Antibody in PBS with 0.02% sodium azide, 50% glycerol and 0.4-0.5mg/ml BSA	100 ul

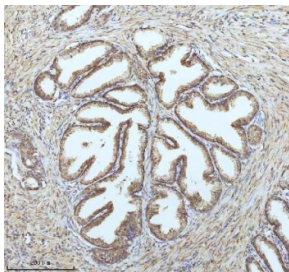
Recombinant **RABBIT MONOCLONAL**

[Bulk quote request](#)

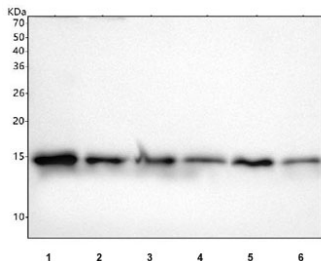
Availability	1-3 days
Species Reactivity	Human, Mouse, Rat
Format	Purified
Clonality	Recombinant Rabbit Monoclonal
Isotype	Rabbit IgG
Clone Name	29P19
Purity	Affinity chromatography
UniProt	Q9Y237
Localization	Cytoplasm, Nucleus
Applications	Western Blot : 1:500-1:2000 Immunohistochemistry (FFPE) : 1:50-1:200
Limitations	This PIN4 antibody is available for research use only.



IHC staining of FFPE human prostate cancer tissue with PIN4 antibody. HIER: boil tissue sections in pH8 EDTA for 20 min and allow to cool before testing.



IHC staining of FFPE human prostate cancer tissue with PIN4 antibody. HIER: boil tissue sections in pH8 EDTA for 20 min and allow to cool before testing.



Western blot testing of 1) human HepG2, 2) human HeLa, 3) rat liver, 4) rat brain, 5) mouse liver and 6) mouse brain tissue lysate with PIN4 antibody. Predicted molecular weight ~14 kDa.

Description

PIN4 is a ribosomal RNA processing factor in ribosome biogenesis. Binds to tightly bent AT-rich stretches of double-stranded DNA. [UniProt]

Application Notes

Optimal dilution of the PIN4 antibody should be determined by the researcher.

Immunogen

A synthetic peptide specific to human PIN4 protein was used as the immunogen for the PIN4 antibody.

Storage

Store the PIN4 antibody at -20°C.