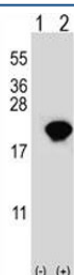


PIN1 Antibody (F51450)

| Catalog No. | Formulation | Size |
|---------------|--|---------|
| F51450-0.4ML | In 1X PBS, pH 7.4, with 0.09% sodium azide | 0.4 ml |
| F51450-0.08ML | In 1X PBS, pH 7.4, with 0.09% sodium azide | 0.08 ml |

[Bulk quote request](#)

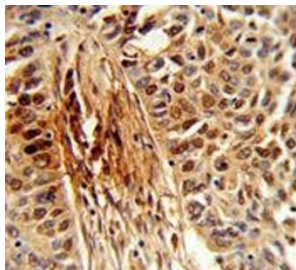
| | |
|-----------------------------|--|
| Availability | 1-3 business days |
| Species Reactivity | Human |
| Predicted Reactivity | Primate |
| Format | Antigen affinity purified |
| Clonality | Polyclonal (rabbit origin) |
| Isotype | Rabbit Ig |
| Purity | Antigen affinity |
| UniProt | Q13526 |
| Applications | Western Blot : 1:1000 IHC (Paraffin) : 1:50-1:100 Flow Cytometry : 1:10-1:50 Immunofluorescence : 1:10-1:50 |
| Limitations | This PIN1 antibody is available for research use only. |



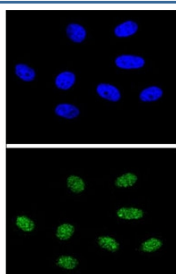
Western blot analysis of PIN1 antibody and 293 cell lysate either nontransfected (Lane 1) or transiently transfected (2) with the PIN1 gene. Expected molecular weight ~18kDa.



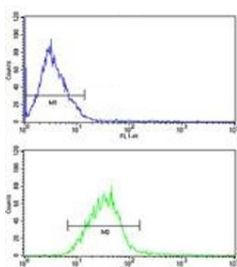
Western blot analysis of PIN1 antibody and HL-60 lysate



IHC analysis of FFPE human lung carcinoma stained with PIN1 antibody



Confocal immunofluorescent analysis of PIN1 antibody with 293 cells followed by Alexa Fluor 488-conjugated goat anti-rabbit IgG (green). DAPI was used as a nuclear counterstain (blue).



PIN1 antibody FACS analysis of MCF-7 cells (green) compared to a [negative control](http://www.ncbi.nlm.nih.gov/pmc/articles/PMC1150001/) (blue). FITC-conjugated goat-anti-rabbit secondary Ab was used for the analysis.

Description

PIN1 is an essential nuclear peptidylprolyl cis-trans isomerase (PPIase; EC 5.2.1.8) involved in regulation of mitosis.

Application Notes

Titration of the PIN1 antibody may be required due to differences in protocols and secondary/substrate sensitivity.

Immunogen

A portion of amino acids 30-56 from the human protein was used as the immunogen for this PIN1 antibody.

Storage

Aliquot the PIN1 antibody and store frozen at -20°C or colder. Avoid repeated freeze-thaw cycles.

