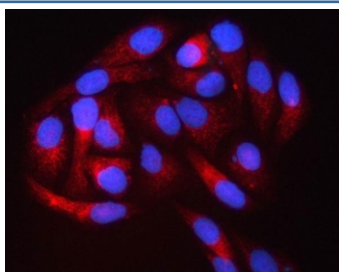


PIGS Antibody / Phosphatidylinositol glycan class S (RQ8074)

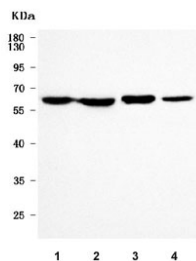
Catalog No.	Formulation	Size
RQ8074	0.5mg/ml if reconstituted with 0.2ml sterile DI water	100 ug

Bulk quote request

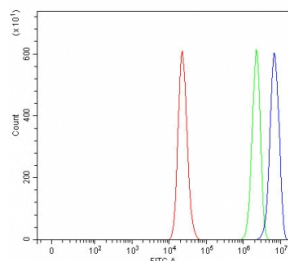
Availability	1-3 business days
Species Reactivity	Human, Rat
Format	Antigen affinity purified
Clonality	Polyclonal (rabbit origin)
Isotype	Rabbit IgG
Purity	Antigen affinity purified
Buffer	Lyophilized from 1X PBS with 2% Trehalose
UniProt	Q96S52
Localization	Cytoplasm
Applications	Western Blot : 0.5-1ug/ml Flow Cytometry : 1-3ug/million cells Immunofluorescence : 5ug/ml Direct ELISA : 0.1-0.5ug/ml
Limitations	This PIGS antibody is available for research use only.



Immunofluorescent staining of FFPE human HeLa cells with PIGS antibody (red) and DAPI nuclear stain (blue). HIER: steam section in pH6 citrate buffer for 20 min.



Western blot testing of 1) human HCCT, 2) human HCCP, 3) rat liver and 4) rat RH35 cell lysate with PIGS antibody. Predicted molecular weight ~61 kDa.



Flow cytometry testing of fixed and permeabilized human RT4 cells with PIGS antibody at 1ug/million cells (blocked with goat sera); Red=cells alone, Green=isotype control, Blue= PIGS antibody.

Description

GPI transamidase component PIG-S is an enzyme that in humans is encoded by the PIGS gene. This gene encodes a protein that is involved in GPI-anchor biosynthesis. The glycosylphosphatidylinositol (GPI) anchor is a glycolipid found on many blood cells and serves to anchor proteins to the cell surface. This gene encodes an essential component of the multisubunit enzyme, GPI transamidase. GPI transamidase mediates GPI anchoring in the endoplasmic reticulum, by catalyzing the transfer of fully assembled GPI units to proteins.

Application Notes

Optimal dilution of the PIGS antibody should be determined by the researcher.

Immunogen

E. coli-derived recombinant human protein (amino acids R184-D504) was used as the immunogen for the PIGS antibody.

Storage

After reconstitution, the PIGS antibody can be stored for up to one month at 4oC. For long-term, aliquot and store at -20oC. Avoid repeated freezing and thawing.