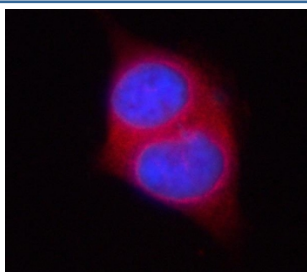


## Phosphoserine aminotransferase Antibody / PSAT1 (RQ8212)

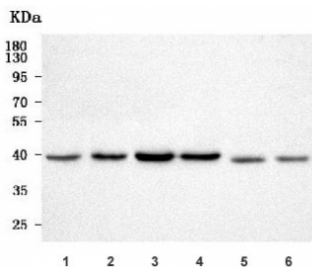
Catalog No.	Formulation	Size
RQ8212	0.5mg/ml if reconstituted with 0.2ml sterile DI water	100 ug

**Bulk quote request**

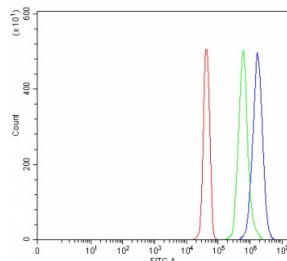
<b>Availability</b>	1-3 business days
<b>Species Reactivity</b>	Human, Mouse, Rat
<b>Format</b>	Antigen affinity purified
<b>Clonality</b>	Polyclonal (rabbit origin)
<b>Isotype</b>	Rabbit IgG
<b>Purity</b>	Antigen affinity purified
<b>Buffer</b>	Lyophilized from 1X PBS with 2% Trehalose
<b>UniProt</b>	Q9Y617
<b>Localization</b>	Cytoplasm
<b>Applications</b>	Western Blot : 0.5-1ug/ml Immunofluorescence : 5ug/ml Flow Cytometry : 1-3ug/million cells Direct ELISA : 0.1-0.5ug/ml
<b>Limitations</b>	This Phosphoserine aminotransferase antibody is available for research use only.



Immunofluorescent staining of FFPE human PC-3 cells with Phosphoserine aminotransferase antibody (red) and DAPI nuclear stain (blue). HIER: steam section in pH6 citrate buffer for 20 min.



Western blot testing of 1) human HeLa, 2) human 293T, 3) human HepG2, 4) human Jurkat, 5) rat brain and 6) mouse brain tissue lysate with Phosphoserine aminotransferase antibody. Predicted molecular weight: 35-40 kDa (two isoforms).



Flow cytometry testing of fixed and permeabilized human JK cells with Phosphoserine aminotransferase antibody at 1ug/million cells (blocked with goat sera); Red=cells alone, Green=isotype control, Blue= Phosphoserine aminotransferase antibody.

## Description

Phosphoserine aminotransferase (PSA), also known as phosphohydroxythreonine aminotransferase (PSAT), is an enzyme that in humans is encoded by the PSAT1 gene. This gene encodes a member of the class-V pyridoxal-phosphate-dependent aminotransferase family. The encoded protein is a phosphoserine aminotransferase and decreased expression may be associated with schizophrenia. Mutations in this gene are also associated with phosphoserine aminotransferase deficiency. Alternative splicing results in multiple transcript variants.

## Application Notes

Optimal dilution of the Phosphoserine aminotransferase antibody should be determined by the researcher.

## Immunogen

E. coli-derived recombinant human protein (amino acids M1-K363) was used as the immunogen for the Phosphoserine aminotransferase antibody.

## Storage

After reconstitution, the Phosphoserine aminotransferase antibody can be stored for up to one month at 4oC. For long-term, aliquot and store at -20oC. Avoid repeated freezing and thawing.