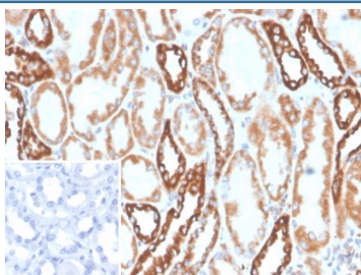


Phospholipase A2 receptor 1 Antibody / PLA2R1 [clone PLA2R1/4894] (V5698)

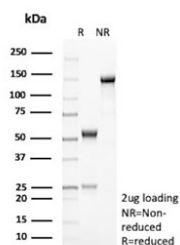
Catalog No.	Formulation	Size
V5698-100UG	0.2 mg/ml in 1X PBS with 0.1 mg/ml BSA (US sourced), 0.05% sodium azide	100 ug
V5698-20UG	0.2 mg/ml in 1X PBS with 0.1 mg/ml BSA (US sourced), 0.05% sodium azide	20 ug
V5698SAF-100UG	1 mg/ml in 1X PBS; BSA free, sodium azide free	100 ug

[Bulk quote request](#)

Availability	1-3 business days
Species Reactivity	Human
Format	Purified
Clonality	Monoclonal (mouse origin)
Isotype	Mouse IgG1, kappa
Clone Name	PLA2R1/4894
Purity	Protein G affinity
UniProt	Q13018
Localization	Cell membrane, Secreted
Applications	Immunohistochemistry (FFPE) : 1-2ug/ml
Limitations	This Phospholipase A2 receptor 1 antibody is available for research use only.



IHC staining of FFPE human kidney tissue with Phospholipase A2 receptor 1 antibody (clone PLA2R1/4894). Inset: PBS used in place of primary Ab (secondary Ab negative control). HIER: boil tissue sections in pH 9 10mM Tris with 1mM EDTA for 20 min and allow to cool before testing.



SDS-PAGE analysis of purified, BSA-free Phospholipase A2 receptor 1 antibody (clone PLA2R1/4894) as confirmation of integrity and purity.

Description

This gene represents a phospholipase A2 receptor. The encoded protein likely exists as both a transmembrane form and a soluble form. The transmembrane receptor may play a role in clearance of phospholipase A2, thereby inhibiting its action. Polymorphisms at this locus have been associated with susceptibility to idiopathic membranous nephropathy. Alternatively spliced transcript variants encoding different isoforms have been identified.

Application Notes

Optimal dilution of the Phospholipase A2 receptor 1 antibody should be determined by the researcher.

Immunogen

A portion of amino acids 300-600 from human PLA2R1 protein was used as the immunogen for the Phospholipase A2 receptor 1 antibody.

Storage

Aliquot the Phospholipase A2 receptor 1 antibody and store frozen at -20oC or colder. Avoid repeated freeze-thaw cycles.