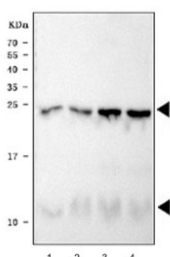


## Phospholamban Antibody (R30366)

Catalog No.	Formulation	Size
R30366	0.5mg/ml if reconstituted with 0.2ml sterile DI water	100 ug

**Bulk quote request**

<b>Availability</b>	1-3 business days
<b>Species Reactivity</b>	Mouse, Rat
<b>Format</b>	Antigen affinity purified
<b>Clonality</b>	Polyclonal (rabbit origin)
<b>Isotype</b>	Rabbit IgG
<b>Purity</b>	Antigen affinity
<b>Buffer</b>	Lyophilized from 1X PBS with 2.5% BSA and 0.025% sodium azide/thimerosal
<b>UniProt</b>	P26678
<b>Applications</b>	Western Blot : 0.5-1ug/ml
<b>Limitations</b>	This Phospholamban antibody is available for research use only.



Western blot testing of 1) rat heart, 2) rat heart, 3) mouse heart and 4) mouse heart tissue lysate with Phospholamban antibody. Predicted molecular weight: 6/12/18/24 kDa (monomer/dimer/oligomers).

## Description

Phospholamban is a 52 amino acid integral membrane protein that regulates the Ca<sup>2+</sup> pump in cardiac muscle and skeletal muscle cells. The subsequent activation of the Ca(2+) pump leads to enhanced muscle relaxation rates, thereby contributing to the inotropic response elicited in heart by beta-agonists. Phospholamban is also expressed in slow-twitch skeletal muscle and some smooth muscle cells. McTiernan et al.(1999) observed that human ventricle and quadriceps displayed high levels of phospholamban transcripts and proteins, with markedly lower expression observed in smooth muscles, while the right atrium also expressed low levels of phospholamban. The structure of the human phospholamban gene closely resembles that reported for chicken, rabbit, rat, and mouse. Comparison of the human to other mammalian phospholamban genes indicated a marked conservation of sequence for at least 217 bp upstream of the transcription

start site.

## Application Notes

The stated application concentrations are suggested starting amounts. Titration of the Phospholamban antibody may be required due to differences in protocols and secondary/substrate sensitivity.

## Immunogen

N-terminus amino acids EKVQYLTRSAIRRAS were used as the immunogen for this Phospholamban antibody.

## Storage

After reconstitution, the Phospholamban antibody can be stored for up to one month at 4°C. For long-term, aliquot and store at -20°C. Avoid repeated freezing and thawing.