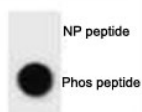


## Phospho-ULK1 Antibody (pS317) (F48758)

Catalog No.	Formulation	Size
F48758-0.4ML	In 1X PBS, pH 7.4, with 0.09% sodium azide	0.4 ml
F48758-0.08ML	In 1X PBS, pH 7.4, with 0.09% sodium azide	0.08 ml

[Bulk quote request](#)

<b>Availability</b>	1-3 business days
<b>Species Reactivity</b>	Human
<b>Format</b>	Antigen affinity purified
<b>Clonality</b>	Polyclonal (rabbit origin)
<b>Isotype</b>	Rabbit Ig
<b>Purity</b>	Antigen affinity
<b>UniProt</b>	O75385
<b>Applications</b>	Dot Blot : 1:500
<b>Limitations</b>	This phospho-ULK1 antibody is available for research use only.



Dot blot analysis of phospho-ULK1 antibody. 50ng of phos-peptide or nonphos-peptide per dot were spotted.

## Description

Involved in autophagy. Required for autophagosome formation (By similarity). Target of the TOR kinase signaling pathway that regulates autophagy through the control of phosphorylation status of ATG13/KIAA0652 and ULK1, and the regulation of the ATG13-ULK1-RB1CC1 complex (By similarity). Phosphorylates ATG13/KIAA0652. Involved in axon growth (By similarity). Plays an essential role in neurite extension of cerebellar granule cells (By similarity).

## Application Notes

Titration of the phospho-ULK1 antibody may be required due to differences in protocols and secondary/substrate sensitivity.

## Immunogen

This phospho-ULK1 antibody was produced from rabbits immunized with a KLH conjugated synthetic phosphopeptide corresponding to amino acid residues surrounding pS317 of human ULK1.

## Storage

Aliquot the phospho-ULK1 antibody and store frozen at -20oC or colder. Avoid repeated freeze-thaw cycles.