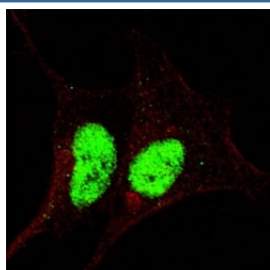


Phospho-SOX2 Antibody (pS246) (F48650)

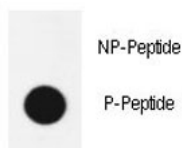
Catalog No.	Formulation	Size
F48650-0.4ML	In 1X PBS, pH 7.4, with 0.09% sodium azide	0.4 ml
F48650-0.08ML	In 1X PBS, pH 7.4, with 0.09% sodium azide	0.08 ml

[Bulk quote request](#)

Availability	1-3 business days
Species Reactivity	Human
Predicted Reactivity	Mouse
Format	Antigen affinity purified
Clonality	Polyclonal (rabbit origin)
Isotype	Rabbit Ig
Purity	Antigen affinity
UniProt	P48431
Applications	Immunofluorescence : 1:200 Dot Blot : 1:500
Limitations	This phospho-SOX2 antibody is available for research use only.



Fluorescent confocal image of SY5Y cells stained with phospho-Sox2 antibody at 1:200. The immunosignal is localized to the nucleus.



Dot blot analysis of phospho-Sox2 antibody. 50ng of phos-peptide or nonphos-peptide per dot were spotted.

Description

This intronless gene encodes a member of the SRY-related HMG-box (SOX) family of transcription factors involved in the regulation of embryonic development and in the determination of cell fate. The product of this gene is required for stem-cell maintenance in the central nervous system, and also regulates gene expression in the stomach. Mutations in this gene have been associated with optic nerve hypoplasia and with syndromic microphthalmia, a severe form of structural eye malformation. This gene lies within an intron of another gene called SOX2 overlapping transcript (SOX2OT).

Application Notes

Titration of the phospho-SOX2 antibody may be required due to differences in protocols and secondary/substrate sensitivity.

Immunogen

This phospho-SOX2 antibody was produced from rabbits immunized with a KLH conjugated synthetic phosphopeptide corresponding to amino acid residues surrounding pS246 of human SOX2.

Storage

Aliquot the phospho-SOX2 antibody and store frozen at -20oC or colder. Avoid repeated freeze-thaw cycles.