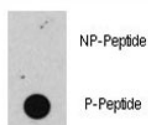


## Phospho-Rb Antibody (pS608) (F48443)

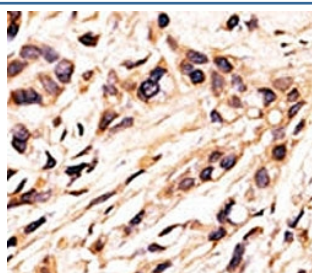
Catalog No.	Formulation	Size
F48443-0.4ML	In 1X PBS, pH 7.4, with 0.09% sodium azide	0.4 ml
F48443-0.08ML	In 1X PBS, pH 7.4, with 0.09% sodium azide	0.08 ml

**Bulk quote request**

<b>Availability</b>	1-3 business days
<b>Species Reactivity</b>	Human
<b>Format</b>	Antigen affinity purified
<b>Clonality</b>	Polyclonal (rabbit origin)
<b>Isotype</b>	Rabbit Ig
<b>Purity</b>	Antigen affinity
<b>UniProt</b>	P06400
<b>Applications</b>	Dot Blot : 1:500 IHC (Paraffin) : 1:50-1:100
<b>Limitations</b>	This phospho-Rb antibody is available for research use only.



Dot blot analysis of phospho-Rb antibody. 50ng of phos-peptide or nonphos-peptide per dot were spotted.



IHC analysis of FFPE human breast carcinoma tissue stained with the phospho-Rb antibody.

## Description

Retinoblastoma (RB) is an embryonic malignant neoplasm of retinal origin. It almost always presents in early childhood and is often bilateral. Spontaneous regression occurs in some cases.

## Application Notes

Titration of the phospho-Rb antibody may be required due to differences in protocols and secondary/substrate sensitivity.

## Immunogen

This phospho-Rb antibody was produced from rabbits immunized with a KLH conjugated synthetic phosphopeptide corresponding to amino acid residues surrounding phosphorylated S608 of human Rb.

## Storage

Aliquot the phospho-Rb antibody and store frozen at -20oC or colder. Avoid repeated freeze-thaw cycles.