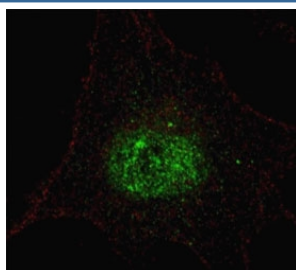


Phospho-PDX1 Antibody (pT11) (F48610)

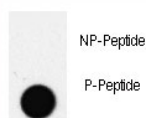
Catalog No.	Formulation	Size
F48610-0.4ML	In 1X PBS, pH 7.4, with 0.09% sodium azide	0.4 ml
F48610-0.08ML	In 1X PBS, pH 7.4, with 0.09% sodium azide	0.08 ml

[Bulk quote request](#)

Availability	1-3 business days
Species Reactivity	Human
Predicted Reactivity	Mouse, Rat
Format	Antigen affinity purified
Clonality	Polyclonal (rabbit origin)
Isotype	Rabbit Ig
Purity	Antigen affinity
UniProt	P52945
Applications	Immunofluorescence : 1:100 Dot Blot : 1:500
Limitations	This phospho-PDX1 antibody is available for research use only.



Fluorescent confocal image of SY5Y cells stained with phospho-PDX1 antibody. Alexa Fluor 488 conjugated secondary (green) was used. Note the highly specific localization of the immunosignal to the nucleus.



Dot blot analysis of phospho-PDX1 antibody. 50ng of phos-peptide or nonphos-peptide per dot were spotted.

Description

PDX1, Pancreas/duodenum homeobox protein 1, is a transcriptional activator of several genes, including insulin, somatostatin, glucokinase, islet amyloid polypeptide, and glucose transporter type 2. The encoded nuclear protein is involved in the early development of the pancreas and plays a major role in glucose-dependent regulation of insulin gene expression. Defects in this protein are a cause of pancreatic agenesis, which can lead to early-onset insulin-dependent diabetes mellitus (NIDDM), as well as maturity onset diabetes of the young type 4 (MODY4).

Application Notes

Titration of the phospho-PDX1 antibody may be required due to differences in protocols and secondary/substrate sensitivity.

Immunogen

This phospho-PDX1 antibody was produced from rabbits immunized with a KLH conjugated synthetic phosphopeptide corresponding to amino acid residues surrounding pT11 of human PDX1.

Storage

Aliquot the phospho-PDX1 antibody and store frozen at -20oC or colder. Avoid repeated freeze-thaw cycles.