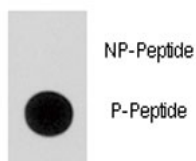


## Phospho-p21 Antibody (pS130) (F48422)

Catalog No.	Formulation	Size
F48422-0.4ML	In 1X PBS, pH 7.4, with 0.09% sodium azide	0.4 ml
F48422-0.08ML	In 1X PBS, pH 7.4, with 0.09% sodium azide	0.08 ml

[Bulk quote request](#)

<b>Availability</b>	1-3 business days
<b>Species Reactivity</b>	Human
<b>Format</b>	Antigen affinity purified
<b>Clonality</b>	Polyclonal (rabbit origin)
<b>Isotype</b>	Rabbit Ig
<b>Purity</b>	Antigen affinity
<b>UniProt</b>	P38936
<b>Applications</b>	Dot Blot : 1:500
<b>Limitations</b>	This phospho-p21 antibody is available for research use only.



Dot blot analysis of phospho-p21 antibody. 50ng of phos-peptide or nonphos-peptide per dot were spotted.

## Description

p21 is a potent cyclin-dependent kinase inhibitor. It binds to and inhibits the activity of cyclin-CDK2 or -CDK4 complexes, and thus functions as a regulator of cell cycle progression at G1. The expression of this protein is tightly controlled by the tumor suppressor protein p53, through which this protein mediates the p53-dependent cell cycle G1 phase arrest in response to a variety of stress stimuli. p21 can interact with proliferating cell nuclear antigen (PCNA), a DNA polymerase accessory factor, and plays a regulatory role in S phase DNA replication and DNA damage repair. It was reported to be specifically cleaved by CASP3-like caspases, which thus leads to a dramatic activation of CDK2, and may be instrumental in the execution of apoptosis following caspase activation.

## Application Notes

Titration of the phospho-p21 antibody may be required due to differences in protocols and secondary/substrate sensitivity.

## Immunogen

This phospho-p21 antibody was produced from rabbits immunized with a KLH conjugated synthetic phosphopeptide corresponding to amino acid residues surrounding pS130 of human p21CIP1.

## Storage

Aliquot the phospho-p21 antibody and store frozen at -20oC or colder. Avoid repeated freeze-thaw cycles.