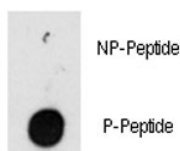


## Phospho-ILK Antibody (pT173) (F48545)

Catalog No.	Formulation	Size
F48545-0.4ML	In 1X PBS, pH 7.4, with 0.09% sodium azide	0.4 ml
F48545-0.08ML	In 1X PBS, pH 7.4, with 0.09% sodium azide	0.08 ml

[Bulk quote request](#)

<b>Availability</b>	1-3 business days
<b>Species Reactivity</b>	Human
<b>Predicted Reactivity</b>	Bovine, Mouse, Rat
<b>Format</b>	Antigen affinity purified
<b>Clonality</b>	Polyclonal (rabbit origin)
<b>Isotype</b>	Rabbit Ig
<b>Purity</b>	Antigen affinity
<b>UniProt</b>	Q13418
<b>Applications</b>	Dot Blot : 1:500
<b>Limitations</b>	This phospho-ILK antibody is available for research use only.



Dot blot analysis of phospho-ILK antibody. 50ng of phos-peptide or nonphos-peptide per dot were spotted.

## Description

Transduction of extracellular matrix signals through integrins influences intracellular and extracellular functions, and appears to require interaction of integrin cytoplasmic domains with cellular proteins. Integrin-linked kinase (ILK), interacts with the cytoplasmic domain of beta-1 integrin. ILK is a serine/threonine protein kinase with 4 ankyrin-like repeats, which associates with the cytoplasmic domain of beta integrins and acts as a proximal receptor kinase regulating integrin-mediated signal transduction.

## Application Notes

Titration of the phospho-ILK antibody may be required due to differences in protocols and secondary/substrate sensitivity.

## Immunogen

This phospho-ILK antibody was produced from rabbits immunized with a KLH conjugated synthetic phosphopeptide corresponding to amino acid residues surrounding pT173 of human ILK.

## Storage

Aliquot the phospho-ILK antibody and store frozen at -20oC or colder. Avoid repeated freeze-thaw cycles.