

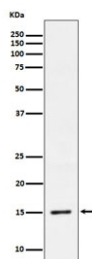
## Phospho-Histone H3.3 Antibody (pS31) [clone 28H13] (RQ8338)

| Catalog No. | Formulation  | Size   |
|-------------|--|--------|
| RQ8338      | Antibody in PBS with 0.02% sodium azide, 50% glycerol and 0.4-0.5mg/ml BSA | 100 ul |

Recombinant RABBIT MONOCLONAL

[Bulk quote request](#)

|                    |  |
|--------------------|--|
| Availability       | 1-3 business days  |
| Species Reactivity | Human  |
| Format             | Purified   |
| Clonality          | Recombinant Rabbit Monoclonal  |
| Isotype            | Rabbit IgG   |
| Clone Name         | 28H13  |
| Purity             | Affinity chromatography  |
| UniProt            | P84243   |
| Applications       | Western Blot : 1:500-1:2000  |
| Limitations        | This Phospho-Histone H3.3 antibody is available for research use only. |



Western blot testing of lysate from HeLa cells treated with Calyculin A.

### Description

Variant histone H3 which replaces conventional H3 in a wide range of nucleosomes in active genes. Constitutes the predominant form of histone H3 in non-dividing cells and is incorporated into chromatin independently of DNA synthesis. [UniProt]

### Application Notes

Optimal dilution of the Phospho-Histone H3.3 antibody should be determined by the researcher.

### Immunogen

A synthetic peptide derived from the area surrounding phosphorylated serine 31 of human Histone H3.3 was used as the immunogen for the Phospho-Histone H3.3 antibody.

## Storage

Store the Phospho-Histone H3.3 antibody at -20oC.