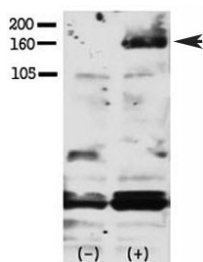


Phospho-HER4/ERBB4 Antibody (pY1188) (F48404)

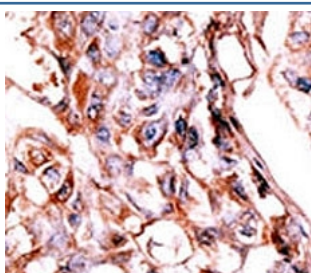
Catalog No.	Formulation	Size
F48404-0.4ML	In 1X PBS, pH 7.4, with 0.09% sodium azide	0.4 ml
F48404-0.08ML	In 1X PBS, pH 7.4, with 0.09% sodium azide	0.08 ml

Bulk quote request

Availability	1-3 business days
Species Reactivity	Human
Format	Antigen affinity purified
Clonality	Polyclonal (rabbit origin)
Isotype	Rabbit Ig
Purity	Antigen affinity
UniProt	Q15303
Applications	Western Blot : 1:1000 IHC (Paraffin) : 1:50-1:100
Limitations	This phospho-HER4 antibody is available for research use only.



Western blot testing of phospho-HER4 antibody and FG pancreatic carcinoma cells treated with or without EGF (50ng/ml) for 15 min. Ab was used at 1:750. Data and protocol kindly provided by Dr. Weis of Cheresch Lab, UCSD.



IHC analysis of FFPE human hepatocarcinoma tissue stained with the phospho-HER4 antibody.

Description

The HER4/ERBB4 gene is a member of the type I receptor tyrosine kinase subfamily that includes EGFR, ERBB2, and ERBB3. It encodes a receptor for NDF/heregulin.

Application Notes

Titration of the phospho-HER4 antibody may be required due to differences in protocols and secondary/substrate sensitivity.

Immunogen

This phospho-HER4 antibody was produced from rabbits immunized with a KLH conjugated synthetic phosphopeptide corresponding to amino acid residues surrounding pY1188 of human HER4.

Storage

Aliquot the phospho-HER4 antibody and store frozen at -20oC or colder. Avoid repeated freeze-thaw cycles.