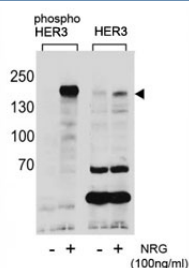


## Phospho-HER3 Antibody (pY1289) (F48624)

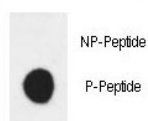
Catalog No.	Formulation	Size
F48624-0.4ML	In 1X PBS, pH 7.4, with 0.09% sodium azide	0.4 ml
F48624-0.08ML	In 1X PBS, pH 7.4, with 0.09% sodium azide	0.08 ml

**Bulk quote request**

<b>Availability</b>	1-3 business days
<b>Species Reactivity</b>	Human
<b>Format</b>	Antigen affinity purified
<b>Clonality</b>	Polyclonal (rabbit origin)
<b>Isotype</b>	Rabbit Ig
<b>Purity</b>	Antigen affinity
<b>UniProt</b>	P21860
<b>Applications</b>	Dot Blot : 1:500 Western Blot : 1:1000
<b>Limitations</b>	This phospho-HER3 antibody is available for research use only.



Western blot analysis of extracts from T47D cells, untreated or treated with NRG, using phospho-HER3 antibody (left) or nonphos Ab (right).



Dot blot analysis of phospho-HER3 antibody. 50ng of phos-peptide or nonphos-peptide per dot were spotted.

## Description

This gene encodes a member of the epidermal growth factor receptor (EGFR) family of receptor tyrosine kinases. This membrane-bound protein has a neuregulin binding domain but not an active kinase domain. It therefore can bind this ligand but not convey the signal into the cell through protein phosphorylation. However, it does form heterodimers with other EGF receptor family members which do have kinase activity. Heterodimerization leads to the activation of pathways which lead to cell proliferation or differentiation. Amplification of this gene and/or overexpression of its protein have been reported in numerous cancers, including prostate, bladder, and breast tumors. Alternate transcriptional splice variants encoding different isoforms have been characterized. One isoform lacks the intermembrane region and is secreted outside the cell. This form acts to modulate the activity of the membrane-bound form.

## Application Notes

Titration of the phospho-HER3 antibody may be required due to differences in protocols and secondary/substrate sensitivity.

## Immunogen

This phospho-HER3 antibody was produced from rabbits immunized with a KLH conjugated synthetic phosphopeptide corresponding to amino acid residues surrounding pY1289 of human HER3/ERBB3.

## Storage

Aliquot the phospho-HER3 antibody and store frozen at -20oC or colder. Avoid repeated freeze-thaw cycles.