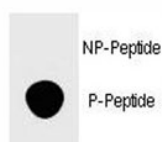


## Phospho-FOXP3 Antibody (pS418) (F48635)

| Catalog No.   | Formulation                                | Size    |
|---------------|--|---------|
| F48635-0.4ML  | In 1X PBS, pH 7.4, with 0.09% sodium azide | 0.4 ml  |
| F48635-0.08ML | In 1X PBS, pH 7.4, with 0.09% sodium azide | 0.08 ml |

[Bulk quote request](#)

|                             |   |
|-----------------------------|---|
| <b>Availability</b>         | 1-3 business days   |
| <b>Species Reactivity</b>   | Human   |
| <b>Predicted Reactivity</b> | Primate   |
| <b>Format</b>               | Antigen affinity purified                                       |
| <b>Clonality</b>            | Polyclonal (rabbit origin)                                      |
| <b>Isotype</b>              | Rabbit Ig   |
| <b>Purity</b>               | Antigen affinity  |
| <b>UniProt</b>              | Q9BZS1  |
| <b>Applications</b>         | Dot Blot : 1:500  |
| <b>Limitations</b>          | This phospho-FOXP3 antibody is available for research use only. |



Dot blot analysis of phospho-FOXP3 antibody. 50ng of phos-peptide or nonphos-peptide per dot were spotted.

## Description

The protein is a member of the forkhead/winged-helix family of transcriptional regulators. Defects in this gene are the cause of immunodeficiency polyendocrinopathy, enteropathy, X-linked syndrome (IPEX), also known as X-linked autoimmunity-immunodeficiency syndrome.

## Application Notes

Titration of the phospho-FOXP3 antibody may be required due to differences in protocols and secondary/substrate sensitivity.

## Immunogen

This phospho-FOXP3 antibody was produced from rabbits immunized with a KLH conjugated synthetic phosphopeptide corresponding to amino acid residues surrounding pS418 of human FOXP3.

## Storage

Aliquot the phospho-FOXP3 antibody and store frozen at -20oC or colder. Avoid repeated freeze-thaw cycles.

## Alternate Names

Scurfin