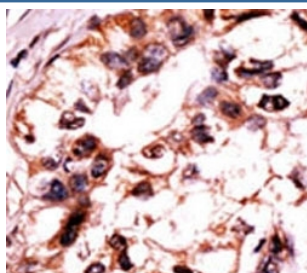


Phospho-ERK3 Antibody (pS189) (F53755)

Catalog No.	Formulation	Size
F53755-0.4ML	In 1X PBS, pH 7.4, with 0.09% sodium azide	0.4 ml
F53755-0.08ML	In 1X PBS, pH 7.4, with 0.09% sodium azide	0.08 ml

[Bulk quote request](#)

Availability	1-3 business days
Species Reactivity	Human
Predicted Reactivity	Chicken, Mouse, Rat
Format	Antigen affinity purified
Clonality	Polyclonal (rabbit origin)
Isotype	Rabbit Ig
Purity	Antigen affinity
UniProt	Q16659
Applications	IHC (Paraffin) : 1:50-1:100
Limitations	This phospho-ERK3 antibody is available for research use only.



IHC analysis of FFPE human hepatocarcinoma tissue stained with the ERK3 antibody.

Description

ERK3 is a member of the Ser/Thr protein kinase family, and is most closely related to mitogen-activated protein kinases (MAP kinases). MAP kinases also known as extracellular signal-regulated kinases (ERKs), are activated through protein phosphorylation cascades and act as integration points for multiple biochemical signals. This kinase is localized in the nucleus, and has been reported to be activated in fibroblasts upon treatment with serum or phorbol esters.

Application Notes

Titration of the phospho-ERK3 antibody may be required due to differences in protocols and secondary/substrate

sensitivity.

Immunogen

This phospho-ERK3 antibody was produced from rabbits immunized with a KLH conjugated synthetic phosphopeptide corresponding to amino acid residues surrounding pS189 of human ERK3.

Storage

Aliquot the phospho-ERK3 antibody (phospho-S189) and store frozen at -20°C or colder. Avoid repeated freeze-thaw cycles.