

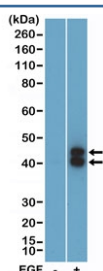
## Phospho-ERK1/2 Antibody (pThr202/pTyr204) [clone RM451] (R20465)

Catalog No.	Formulation	Size
R20465-0.1ML	Antibody in PBS with 50% glycerol, 1% BSA and 0.09% sodium azide	100 ul

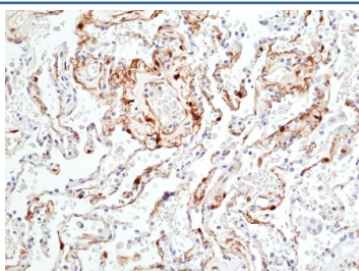
Recombinant **RABBIT MONOCLONAL**

**Bulk quote request**

<b>Availability</b>	1-3 business days
<b>Species Reactivity</b>	Human
<b>Format</b>	Purified
<b>Clonality</b>	Recombinant Rabbit Monoclonal
<b>Isotype</b>	Rabbit IgG
<b>Clone Name</b>	RM451
<b>Purity</b>	Protein A purified from animal origin-free supernatant
<b>UniProt</b>	P27361, P28482
<b>Applications</b>	Immunohistochemistry (FFPE) : 1:100-1:200 Western Blot : 1:500 -1:1000
<b>Limitations</b>	This recombinant phospho-ERK1/2 antibody is available for research use only.



Western blot testing of lysate from human A431 cells, non-treated (-) or treated (+) with EGF, using recombinant phospho-ERK1/2 antibody at a 1:1000 dilution. Expected molecular weight: ERK1 ~42 kDa, ERK2 ~43 kDa.



IHC staining of FFPE human lung tissue with recombinant phospho-ERK1/2 antibody at 1:200.

## Description

This antibody reacts to human p44/42 MAPK (ERK1/2) only when phosphorylated at Thr202 and Tyr204. There is no cross-reactivity to Erk1/2 that is not phosphorylated.

## Application Notes

The stated application concentrations are suggested starting points. Titration of the recombinant phospho-ERK1/2 antibody may be required due to differences in protocols and secondary/substrate sensitivity.

## Immunogen

A phospho-peptide corresponding to human Phospho-p44/42 MAPK (Erk1/2) (Thr202/Tyr204) was used as the immunogen for the phospho-ERK1/2 antibody.

## Storage

Store the recombinant phospho-ERK1/2 antibody at -20oC.