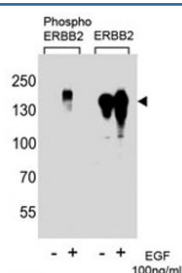


Phospho-ErbB2 Antibody (pY1222) (F52420)

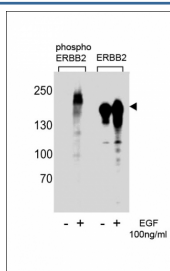
Catalog No.	Formulation	Size
F52420-0.4ML	In 1X PBS, pH 7.4, with 0.09% sodium azide	0.4 ml
F52420-0.08ML	In 1X PBS, pH 7.4, with 0.09% sodium azide	0.08 ml

Bulk quote request

Availability	1-3 business days
Species Reactivity	Human
Format	Antigen affinity purified
Clonality	Polyclonal (rabbit origin)
Isotype	Rabbit Ig
Purity	Antigen affinity
UniProt	P04626
Applications	Western Blot : 1:1000
Limitations	This phospho-ErbB2 antibody is available for research use only.



Western blot analysis of extracts from A431 cells, untreated or treated with EGF (100ng/ml) using phospho-ErbB2 antibody (left) or nonphos Ab (right)



Description

Protein tyrosine kinase that is part of several cell surface receptor complexes, but that apparently needs a coreceptor for ligand binding. Essential component of a neuregulin-receptor complex, although neuregulins do not interact with it alone. GP30 is a potential ligand for this receptor. Regulates outgrowth and stabilization of peripheral microtubules (MTs). Upon ERBB2 activation, the MEMO1-RHOA-DIAPH1 signaling pathway elicits the phosphorylation and thus the inhibition of GSK3B at cell membrane. This prevents the phosphorylation of APC and CLASP2, allowing its association with the cell membrane. In turn, membrane-bound APC allows the localization of MACF1 to the cell membrane, which is required for microtubule capture and stabilization. In the nucleus is involved in transcriptional regulation. Associates with the 5'-TCAAATTC-3' sequence in the PTGS2/COX-2 promoter and activates its transcription. Implicated in transcriptional activation of CDKN1A; the function involves STAT3 and SRC. Involved in the transcription of rRNA genes by RNA Pol I and enhances protein synthesis and cell growth.

Application Notes

Titration of the phospho-ErbB2 antibody may be required due to differences in protocols and secondary/substrate sensitivity.

Immunogen

This phospho-ErbB2 antibody was produced from rabbits immunized with a KLH conjugated synthetic phosphopeptide corresponding to amino acid residues surrounding pY1222 of the human protein.

Storage

Aliquot the phospho-ErbB2 antibody and store frozen at -20oC or colder. Avoid repeated freeze-thaw cycles.