

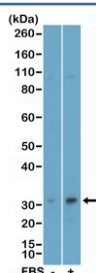
Phospho-EIF4E Antibody (pSer209) [clone RM452] (R20466)

Catalog No.	Formulation	Size
R20466-0.1ML	Antibody in PBS with 50% glycerol, 1% BSA and 0.09% sodium azide	100 ul

Recombinant **RABBIT MONOCLONAL**

[Bulk quote request](#)

Availability	1-3 business days
Species Reactivity	Human
Format	Purified
Clonality	Recombinant Rabbit Monoclonal
Isotype	Rabbit IgG
Clone Name	RM452
Purity	Protein A purified from animal origin-free supernatant
UniProt	P06730
Applications	Western Blot : 1:500-1:1000
Limitations	This recombinant phospho-EIF4E antibody is available for research use only.



Western blot testing of lysate of human MCF-7 cells, non-treated (-) or treated (+) with fetal bovine serum, using recombinant phospho-EIF4E antibody at a 1:1000 dilution.

Description

This antibody reacts to human eIF4E only when phosphorylated at Ser209. There is no cross-reactivity to eIF4E that is not phosphorylated.

Application Notes

The stated application concentrations are suggested starting points. Titration of the recombinant phospho-EIF4E antibody may be required due to differences in protocols and secondary/substrate sensitivity.

Immunogen

The amino acid sequence surrounding pSer209 of human EIF4E protein was used as the immunogen for the phospho-

EIF4E antibody.

Storage

Store the recombinant phospho-eIF4E antibody at -20°C.