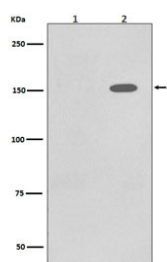


## Phospho-EGF Receptor Antibody (pY1086) [clone EFI-5] (RQ4841)

Catalog No.	Formulation	Size
RQ4841	Antibody in PBS with 0.02% sodium azide, 50% glycerol and 0.4-0.5mg/ml BSA	100 ul

[Bulk quote request](#)

Availability	1-2 weeks
Species Reactivity	Human
Format	Purified
Clonality	Rabbit Monoclonal
Isotype	Rabbit IgG
Clone Name	EFI-5
Purity	Affinity purified
UniProt	P00533
Applications	Western Blot : 1:500-1:2000
Limitations	This phospho-EGF Receptor antibody is available for research use only.



Western blot testing of lysate from human A431 cells 1) untreated and 2) treated with EGF, with phospho-EGF Receptor antibody. Expected molecular weight: 134-170 kDa depending on glycosylation level.

### Description

EGFR is a receptor tyrosine kinase. Receptor for epidermal growth factor (EGF) and related growth factors including TGF- $\alpha$ , amphiregulin, betacellulin, heparin-binding EGF-like growth factor, GP30 and vaccinia virus growth factor. Is involved in the control of cell growth and differentiation.

### Application Notes

Optimal dilution of the phospho-EGF Receptor antibody should be determined by the researcher.

### Immunogen

A synthetic peptide specific to human EGFR (surrounding pY1086) was used as the immunogen for the phospho-EGF Receptor antibody.

## Storage

Store the phospho-EGF Receptor antibody at -20oC.